

County of Santa Clara

Roads and Airports Department

101 Skyport Drive
San Jose, California 95110-1302
1-408-573-2400



PROSPECTIVE BIDDERS

SUBJECT: 2024 MICRO-SURFACING OF COUNTY ROADS AT VARIOUS LOCATIONS

Bid Opening Date: MARCH 28, 2024

ADDENDUM NO. 1

Notice is given that the following changes are hereby made a part of and incorporated into the contract document for the subject project.

1. Reference is made to the Special Provisions, Cover Page:
 - a) Replace Cover Page with the attached revised bid set Cover Page.
2. Reference is made to the Special Provisions, Section 100 – Notice to Bidders:
 - a) Replace page 100-2 with the attached page 100-2R.
3. Reference is made to the Special Provisions, Section 101 – Plans and Specifications:
 - a) Replace page 101-1 with the attached page 101-1R.
 - b) Replace page 101-2 with the attached page 101-2R.
4. Reference is made to the Special Provisions, Section 110 – Technical Specification & Further Conditions:
 - a) Replace page 110-4 with the attached page 110-4R.
 - b) Replace page 110-5 with the attached page 110-5R.
 - c) Replace page 110-37 with the attached page 110-37R.
 - d) Replace page 110-39 with the attached page 110-39R.
 - e) Replace page 110-44 with the attached page 110-44R.
5. Reference is made to the Special Provisions, Section 111 – Bid Form 2A:
 - a) Replace page 111-4 with the attached page 111-4R.
6. Include upon the conclusion of the List of Locations, attached document “Rumble Strip Plans”.



County of Santa Clara

Roads and Airports Department

101 Skyport Drive
San Jose, California 95110-1302
1-408-573-2400



****Bidder shall acknowledge receipt and inclusion of this addendum on page 111-3 of Section 111 "Bid Form 1 - Bid Proposal" of the Special Provisions.****

BID OPENING: Bids will be publicly opened and read by the Clerk of the Board of Supervisors. The opening of bids shall be made available to the public via video teleconference, a link to which will be posted via Addendum to the Invitation to Bid no later than 72 hours before the time scheduled for the opening of bids. The results will be posted on the Clerk of the Board website no later than the following day.

Bids will be accepted by the Clerk of the Board of Supervisors in the Office of the Clerk of the Board of Supervisors, 10th Floor, East Wing of the County Government Center, 70 W. Hedding Street, San Jose, before 2:00 p.m. on March 28, 2024.

The opening of bids will commence shortly after 2:00 p.m., by video teleconference at the following link:
<https://sccgov-org.zoom.us/j/96536627418>

No in-person attendance at the bid opening will be permitted.

Results will be posted no later than close of business March 29, 2024 at the following location:
<https://boardclerk.sccgov.org/public-records/bidopeningresults>

All other terms and conditions shall remain.

3/25/2024

Date: _____

HARRY FREITAS, Director
County of Santa Clara
Roads and Airport

Board of Supervisors: Sylvia Arenas, Cindy Chavez, Otto Lee, Susan Ellenberg, S. Joseph Simitian
County Executive: James R. Williams



SPECIAL PROVISIONS

2024 MICRO-SURFACING OF COUNTY ROADS AT VARIOUS LOCATIONS

COUNTY STANDARD SPECIFICATIONS: MAY 2000

STATE STANDARD SPECIFICATIONS: 2022

BID OPENING DATE : **MARCH 28, 2024**

<http://www.sccgov.org/portal/site/rda/>

BID SET

Contract # - TBD

Engineer File # - **603-5-1-M**

IO:603-R511

Project Engineer **JZ**



County of Santa Clara
Roads and Airports
Department

NOTICE TO BIDDERS**SECTION 100****100-03 PROJECT ENGINEER**

The County of Santa Clara Roads & Airports Department's Project Engineer for this Project is

Jackson Zhang, P.E,

100-04 CONTRACTOR LICENSE

The Contractor shall possess either a Class _____ License or a combination of the following licenses: Class **A and C-12**

If a Bidder does not possess the required Contractor License(s) at the time the Bid is submitted (per Business and Professions Code section 7028.15), the Bid shall be considered non-responsive and shall be rejected by Owner. Owner may enforce the required forfeiture of the Bidder's Bond.

The Bidder and any subcontractors must be licensed by the Contractors State License Board of the State of California, and contractor and subcontractor information as shown on Bid Forms 2A & 2B shall be supplied in accordance with Public Contract Code section 4104.

100-05 STATE OF CALIFORNIA DEPARTMENT OF INDUSTRIAL RELATIONS REGISTRATION

No contractor or subcontractor may be listed on a bid proposal for a public works project unless registered with the State of California Department of Industrial Relations pursuant to Labor Code section 1725.5 (with limited exceptions from this requirement for bid purposes only under Labor Code section 1771.1(a)).

No contractor or subcontractor may be awarded a contract for public work on a public works project unless registered with the Department of Industrial Relations pursuant to Labor Code section 1725.5.

This project is subject to compliance monitoring and enforcement by the Department of Industrial Relations.

Failure of contractor to timely supply missing information shall be cause for rejection of bid.

2024 Micro-Surfacing of County Roads at Various Locations

County Project WBS No. 603-5-1-M IO:603-R511

PLANS AND SPECIFICATIONS**SECTION 101****SECTION 101 - PLANS AND SPECIFICATIONS**

The Project shall be constructed and administered in accordance with the Contract Documents issued for this Project. The Contract Documents consist of the Special Provisions, Plans, County Standard Specifications, County Standard Details, State Standard Specifications, State Standard Plans, and any Addendum or written modification to any of the foregoing. (For definition of "Plans," "County Standard Specifications," and "State Standard Specifications" see Section 1 of the County Standard Specifications as approved May 2000, including any applicable amendments).

The State Standard Specifications applicable to this Project are Sections 9 through 96 inclusive of the State Standard Specifications dated 2018, and its amendments as approved by the State of California, Department of Transportation ("Caltrans"). The required version of the State Standard Specifications and State Standard Plans to be used on this Project is indicated below.

Attention of the Bidder is directed to Section 106(A)(10) of these Special Provisions, which amends Section 5.19 "Coordination, Interpretation and Order of Precedence of Contract Documents" of the County Standard Specifications.

Attention of the Bidder is also directed to Section 110, "Technical Specifications" of these Special Provisions and Section 106 "Amendments to County Standard Details and Specifications", which include modifications and/or additions to the County Standard Specifications, that are particular to this Project.

STANDARD SPECIFICATIONS

COUNTY STANDARD SPECIFICATIONS DATED MAY 2000. Electronic version of the County-issued Amendments to County Standard Specifications is available online for download from County's website at <https://countyroads.sccgov.org/do-business-us/published-standards-specifications-documents-and-forms>. A hard copy of the Amendments is available at the Permit Counter of the County of Santa Clara Department of Roads & Airports located at 101 Skyport Drive, San Jose, California 95110, for walk-in review by Bidders. Amendments with the latest issue date up to the Bid Opening date shall apply to the Project.

STATE STANDARD SPECIFICATIONS DATED 2022. Electronic version of the Caltrans-issued Amendments to State Standard Specifications is available online for download from: Caltrans website at <https://dot.ca.gov/programs/design/ccs-standard-plans-and-standard-specifications>

STANDARD PLANS

COUNTY STANDARD DETAILS MANUAL DATED SEPTEMBER 1997. Electronic version of the County-issued Amendments to County Standard Specifications is available online for download from County's website at <https://countyroads.sccgov.org/do-business-us/published-standards-specifications-documents-and-forms>. A hard copy of the Amendments is available at the Permit Counter of the County of Santa Clara Department of Roads & Airports located at 101 Skyport Drive, San Jose, California 95110, for walk-in review by Bidders. Amendments with the latest issue date up to the Bid Opening date shall apply to the Project.

2024 Micro-Surfacing of County Roads at Various Locations

County Project WBS No. 603-5-1-M IO:603-R511

PLANS AND SPECIFICATIONS

SECTION 101

STATE STANDARD PLANS DATED 2022. Electronic version of the Caltrans-issued Amendments to State Standard Plans is available online for download from: Caltrans website at <https://dot.ca.gov/programs/design/ccs-standard-plans-and-standard-specifications>

TECHNICAL SPECIFICATIONS & FURTHER CONDITIONS**SECTION 110****110-01 ORDER OF WORK**

Order of work shall conform to the provisions in Section 5.05, "Order of Work", of the County Standard Specifications, and these Special Provisions.

Work will be implemented in logical and sequenced segments.

Contractor shall prepare a video (DVD or digital video format) recording of the construction area prior to beginning work. This video shall be the existing condition record of the job site. The video recording shall be done jointly by the Contractor and the Project Inspector and a copy of the video tape shall be furnished to the Project Inspector at the beginning of the Work.

Construction area signs and devices shall be in place prior to beginning work.

Construction area signs and devices will be in place prior to beginning work. Notification in writing to each house, regarding parking will also be done a minimum of 72 hours prior to beginning any work on the applicable street.

A sample of the door hangar notice will be provided at the pre-construction conference for review and approval. Language stating that vehicles will be towed at owner's expense and a 24-hour contact phone number for the contractor is to be included on the notice.

Full compensation for conforming to this section 111-01 shall be considered as included in other items of work.

110-02 SUBMITTALS

Unless otherwise specified or directed by the Project Engineer, all Contract Bid items are subject to the submittal requirements of this Section and are supplemented by the submittal requirements of the specifications for each Bid item. Requirements and procedures for preparing and transmitting submittals to the Project Engineer shall conform to the provisions of County Standard Specifications section 4.06 "Submittal for Materials and Equipment; Section 5, "Control of Work," Section 6 "Control of Materials", Section 86.01.04 "Submittals in relation "Signals, Lighting, Traffic Communication & Other Electrical Systems", and these Special Provisions as follows:

- A. The use of Virtual Project Manager (VPM) will be required. All submittals shall be uploaded in a format conducive to ease of use.
- B. The Contractor shall prepare such working and shop drawings as required by the Engineer for the performance of the work. Such drawings shall be prepared on a reproducible sheet measuring 22 inches by 34 inches, unless otherwise approved by the Engineer. Each drawing shall have the following information:
 - 1. Contract number and name,
 - 2. Number and title of drawing,
 - 3. Date of drawing or revision,
 - 4. Name of Contractor and Subcontractor submitting drawing,

TECHNICAL SPECIFICATIONS & FURTHER CONDITIONS**SECTION 110**

- 5. Clear identification of contents and location of work, and
- 6. Referenced special provisions
- C. The Contractor shall furnish all submittals, including drawings and schedules sufficiently in advance of construction requirements to permit no less than five (5) working days for review and appropriate action by the Project Engineer.
- D. If any submittal shows any variation from the Contract requirements, such variations shall be described in a supplemental letter of submittal, attached to the submittal form.
- E. Re-submittals will be handled in the same manner as first submittals.

110-03 SUPERINTENDENT AND MEETINGS

Attention is directed to Section 5.06 "Superintendent" of the County Standard Specifications.

Weekly project meetings between the Project Engineer, Project Inspector and Contractor are mandatory. In addition, a comprehensive walk-through site meeting is also mandatory. The time and location of these meetings will be established at the Pre-Construction Conference Meeting.

All subcontractors are required to attend weekly project meetings if they are working on a controlling item of Work and/or if their submittals are not approved.

110-04 AS-BUILT RECORD CONSTRUCTION PLANS

In addition to the requirements of the County Standard Specifications section 4.05, "As-Built Record Construction Plans," the following shall apply:

Contractor shall maintain one set of current and accurate redlined construction plans. Upon completion of the Work, and prior to Acceptance of the Project, this redlined set of plans shall be certified by the Inspector, and delivered to Project Engineer.

Full compensation for this Work shall be considered as included in the Contract price paid, and no additional compensation shall be allowed therefor.

110-05 PROGRESS SCHEDULE

Attention is directed to the provisions in Section 8.04 "Progress Schedule" of the County Standard Specifications, and these Special Provisions.

- A. Procedures for Preparation of Project Schedule

TECHNICAL SPECIFICATIONS & FURTHER CONDITIONS**SECTION 110**

COMPONENT MATERIALS	LIMITS
Residual Asphalt	5.5 to 9.5% by dry weight of aggregate
Mineral Filler	0.0 to 3% by dry weight of aggregate
Polymer-Based Modifier	Minimum of 3% solids based on bitumen weight content
Additives	As needed
Water	As needed

RATE OF APPLICATION

The Micro-surfacing mixture will be of the proper consistency at all times, so as to provide the application rate required by the surface condition. The average single application rate, as measured by the County, will be **22 +/-1 lb/SY.**

Contractor will re-apply micro-surfacing if application rate, as measured by County, is below the required application rate.

EQUIPMENT

The contractor will be responsible for providing adequate additional equipment to ensure planned production rate is met in the event there is a breakdown or rejection of equipment.

All equipment, tools, and machines used in the performance of this work will be maintained in satisfactory working condition at all times to ensure a high-quality product.

Suitable surface preparation equipment, traffic control equipment, hand tools, and any other support and safety equipment will be provided by the contractor as necessary to perform the work

MIXING EQUIPMENT

The machine will be specifically designed and manufactured to lay micro-surfacing. The material will be mixed by an automatic-sequenced, self-propelled micro-surfacing mixing machine, which will be a continuous-flow mixing unit able to accurately deliver and proportion the aggregate, emulsified asphalt, mineral filler, control setting additive, and water to a revolving multi-blade, double-shafted mixer and to discharge the mixed product on a continuous-flow basis. The machine will have sufficient storage capacity for aggregate, emulsified asphalt, mineral filler, control additive and water to maintain an adequate supply to the proportioning controls. On major highways, the machine may be required to be a self-loading machine capable of loading materials while continuing to lay micro-surfacing, thereby minimizing construction joints. If used, the self-loading machine will be equipped to allow the operator to have full control of the forward and reverse speeds during applications of the micro-surfacing material and be equipped with opposite-side driver stations to assist in alignment. The self-loading device, opposite-side driver stations, and forward and reverse speed controls will be original equipment manufacturer design.

Truck mounted mixer-spreaders must proportion micro-surfacing materials by volume and mix them in continuous pugmill mixers. Before starting mixing and spreading activities, demonstrate:

1. Rotating and reciprocating equipment are covered with metal guards.

2024 Micro-Surfacing of County Roads at Various Locations

County Project WBS No. 603-5-1-M IO:603-R511

TECHNICAL SPECIFICATIONS & FURTHER CONDITIONS**SECTION 110**

On a daily basis during micro-surfacing placement, gate settings for each truck used are to be recorded and approved by both the project inspector and the contractor's foreman, noting truck, time and any changes from previous setting

Periodic calibration checks ("Spot Checks") may be made by the Engineer at random intervals and is required to ensure machine project performance and compliance. Any truck found to have defective material measurement devices will not be used on the job until it is repaired and recalibrated. Also, if a spot check shows a truck to be out of tolerance by 10% or more, the truck will not be used until it is recalibrated. Spot check testing is not used for Payment purposes.

Spot Check Method: for 1 complete truck load of mix, the actual area placed is measured and noted. The amount of material placed is noted, as indicated on that truck's measurement devices (e.g. number of turns of auger). The resulting pounds per area will be 22 +/-1 Lbs/SY.

WEATHER LIMITATIONS

Micro-surfacing will only be placed if both the pavement and air temperatures are at least **50 degrees F and rising**. Do not place micro-surfacing if either the pavement or air temperature is below 50 degrees F and falling. The expected high temperature must be at least 65 degrees F within 24 hours after placement. Do not place micro-surfacing if rain is imminent or the air temperature is expected to be below 36 degrees F within 24 hours after placement.

SURFACE PREPARATION

The complete street surface will be power swept & vacuumed from curb face to curb face prior to application of micro-surfacing. Contractor will use commercial grade gas-powered rotary brush to remove all dirt and loose material from the pavement. The application of micro-surfacing will not proceed until the inspector has approved the street sweeping. Vacuum Broom sweepers (Mobile or Equivalent) and Rotary Brush Sweeper will be furnished by the Contractor for this portion of the work. If water is used, cracks will be allowed to dry thoroughly before applying micro-surfacing. No dry aggregate, either spilled from the lay-down machine or existing on the road, will be permitted to remain.

Thermoplastic pavement markings will be ground-off and pavement markers (permanent and temporary) removed prior to the application of micro-surfacing as per section 111-12 Remove Traffic Lines, Pavement Markings, & Markers.

All materials so gathered will be properly disposed of offsite at the expense of the Contractor. Contractor will also remove all plant material growing in the street or the interface of the asphalt surface with the lip of P.C.C. gutter prior to placing micro-surfacing, using commercial grade gas-powered rotary brush.

Immediately preceding the micro application, the Contractor will cover all grates, slotted manholes, and other appurtenances on the pavement that would allow the entry of the micro; cover all closed manhole covers, water and gas valve box covers, monuments, monument boxes, etc., with a heavy plastic bag. Locations of manholes, valves and other utility or service entrance will be recorded both on the plans and on the street curb prior to surfacing. Prior to opening the street to traffic, the Contractor will uncover all covered grates and manholes within 72 hours after the surfacing application; micro on all other appurtenances will be broken loose and removed from the street and install centerline rubber floppy markers and stop limit lines.

2024 Micro-Surfacing of County Roads at Various Locations

County Project WBS No. 603-5-1-M IO:603-R511

TECHNICAL SPECIFICATIONS & FURTHER CONDITIONS**SECTION 110**

Compensation for conforming to this section will be considered as included in other items of work.

110-23 CENTER LINE RUMBLE STRIP (12" wide)

Center Line Rumble Strip (12" wide) will be installed per project plans at locations shown.

Construct rumble strips in the top layer of HMA and asphalt concrete surfacing by the ground-in method. Dispose of the removed material. On exposed ground areas prior to striping, apply a fog seal coat. Fog seal coat shall conform to Caltrans Standard Specifications Section 37-4.02. Fog seal shall be placed at a minimum rate of **0.10 Gal/SY** and shall be included in the lineal foot price for the Center Line Rumble Strip.

The contract price paid per linear foot for Center Line Rumble Strip (12" wide) will include full compensation for furnishing all labor, materials, tools, equipment and incidentals, complete in place as shown on the plans, as specified in these special provisions, and as directed by the Engineer, and no additional allowance will be made.

110-24 SUPPLEMENTAL WORK

Supplemental Work shall be as defined in Section 1.02, "Definitions", and shall comply with Section 4.07, "Extra Work", of the County Standard Specifications.

SECTION 111

BID FORM 1

4. BID SCHEDULE

CONTRACTOR'S NAME:						
2024 MICRO-SURFACING OF COUNTY ROADS AT VARIOUS LOCATIONS - BID SCHEDULE						
Bid Item No. (F/S)	REF	Bid Item Description	Quantity	Units	Unit Price	Bid Item Total
1	110-03	SUPERINTENDENT AND MEETINGS	1	LS		
2	110-06	TRAFFIC CONTROL SYSTEM AND/OR TEMPORARY ROADWAY LANE CLOSURE REQUIREMENTS	1	LS		
3	110-15	CLEARING AND GRUBBING	1	LS		
4	110-16	REMOVE TRAFFIC LINES, PAVEMENT MARKINGS & PAVEMENT MARKERS	1	LS		
5	110-16	TESTING, REMOVAL, HANDLING AND DISPOSAL OF YELLOW PAINTED TRAFFIC STRIPES	1	LS		
6	110-17	TYPE II MICRO-SURFACING	400,000	SY		
7	110-19	MICRO-SURFACING HAND WORK	3,000	SY		
8	110-20	THERMOPLASTIC TRAFFIC LINES AND MARKINGS (DETAIL 2)	10,252	LF		
9	110-20	THERMOPLASTIC TRAFFIC LINES AND MARKINGS (DETAIL 9)	240	LF		
10	110-20	THERMOPLASTIC TRAFFIC LINES AND MARKINGS (DETAIL 22)	13,544	LF		
11	110-20	THERMOPLASTIC TRAFFIC LINES AND MARKINGS (DETAIL 27B)	36,653	LF		
12	110-20	THERMOPLASTIC TRAFFIC LINES AND MARKINGS (DETAIL 27C)	322	LF		
13	110-20	THERMOPLASTIC TRAFFIC LINES AND MARKINGS (DETAIL 29)	2,495	LF		
14	110-20	THERMOPLASTIC TRAFFIC LINES AND MARKINGS (DETAIL 32)	920	LF		
15	110-20	THERMOPLASTIC TRAFFIC LINES AND MARKINGS (DETAIL 36)	62	LF		
16	110-20	THERMOPLASTIC TRAFFIC LINES AND MARKINGS (DETAIL 38)	956	LF		
17	110-20	THERMOPLASTIC TRAFFIC LINES AND MARKINGS (DETAIL 38A)	63	LF		
18	110-20	THERMOPLASTIC TRAFFIC LINES AND MARKINGS (DETAIL 39)	3,445	LF		
19	110-20	THERMOPLASTIC TRAFFIC LINES AND MARKINGS (DETAIL 39A)	601	LF		
20	110-20	TYPE C BLUE REFLECTORS	52	EA		
21	110-21	THERMOPLASTIC PAVEMENT MARKINGS –ARROWS, SYMBOLS, WORDS, NUMERALS, CROSSWALKS AND LINES (WHITE)	42,330	SQFT		
22	110-21	THERMOPLASTIC PAVEMENT MARKINGS –ARROWS, SYMBOLS, WORDS, NUMERALS, CROSSWALKS AND LINES (YELLOW)	22,859	SQFT		
23	110-23	CENTER LINE RUMBLE STRIP (12" wide)	9,500	LF		
24	110-24	SUPPLEMENTAL WORK	250,000	EA	\$1.00	\$250,000
TOTAL CONTRACT BASE PRICE FOR ITEMS 1 THROUGH 24 ABOVE:					\$	

2024 Micro-Surfacing of County Roads at Various Locations

County Project WBS No. 603-5-1-M IO:603-R511



Leavesley Rd

Leavesley Rd

12" wide rumble strip
on the center line

00'

Ferguson Rd

See Sheet 2



See Sheet 1

Ferguson Rd

12" wide rumble strip
on the center line

See Sheet 3



See Sheet 2

Ferguson Rd

12" wide rumble strip
on the center line

See Sheet 4



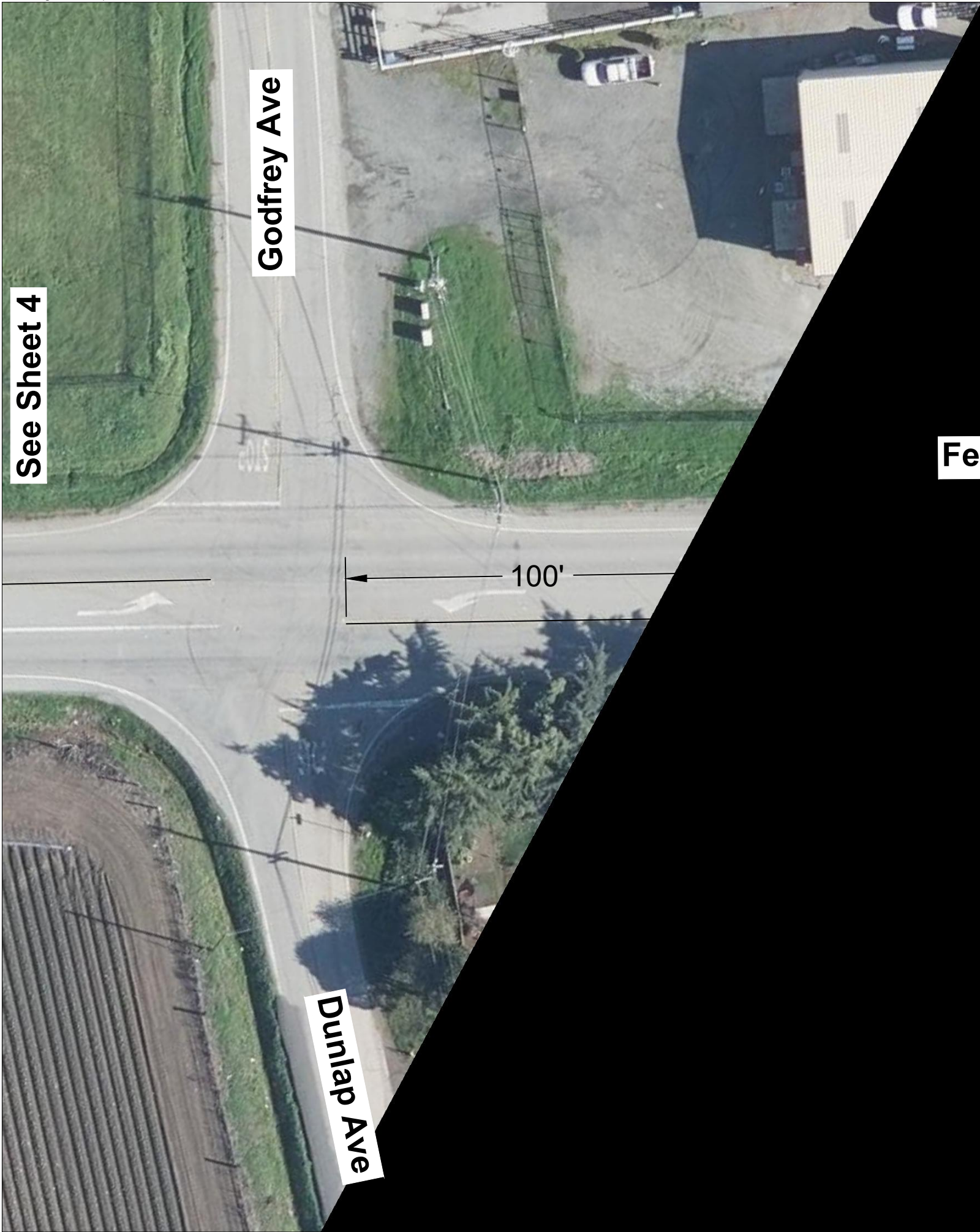
See Sheet 3

Ferguson Rd

12" wide rumble strip
on the center line

100'

See Sheet 5



See Sheet 4



Ferguson Rd

12" wide rumble strip on the center line

See Sheet 6



See Sheet 5



Ferguson Rd

12" wide rumble strip
on the center line

See Sheet 7

See Sheet 6

See Sheet 8

Ferguson Rd

12" wide rumble strip
on the center line





See Sheet 7

Ferguson Rd

12" wide rumble strip
on the center line

See Sheet 9



See Sheet 8

Ferguson Rd

12" wide rumble strip
on the center line

See Sheet 10



See Sheet 9

Ferguson Rd

12" wide rumble strip
on the center line

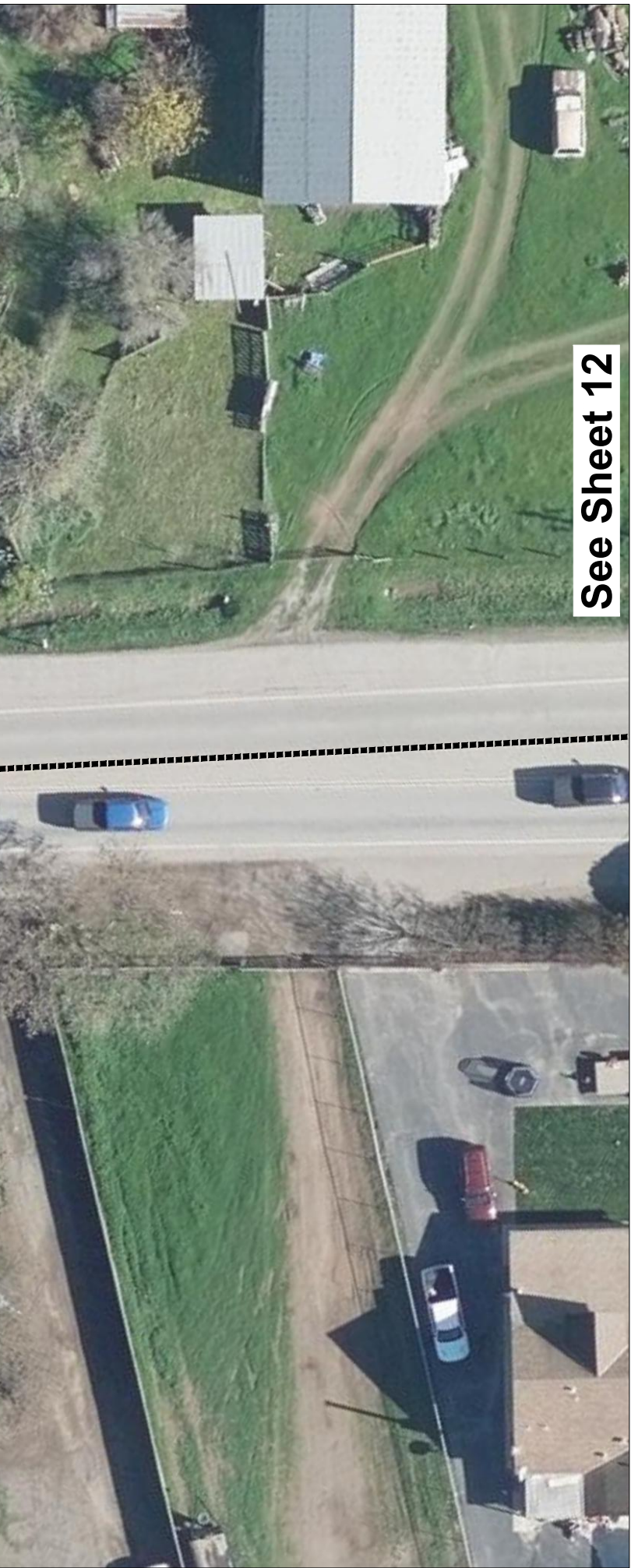
See Sheet 11



See Sheet 10

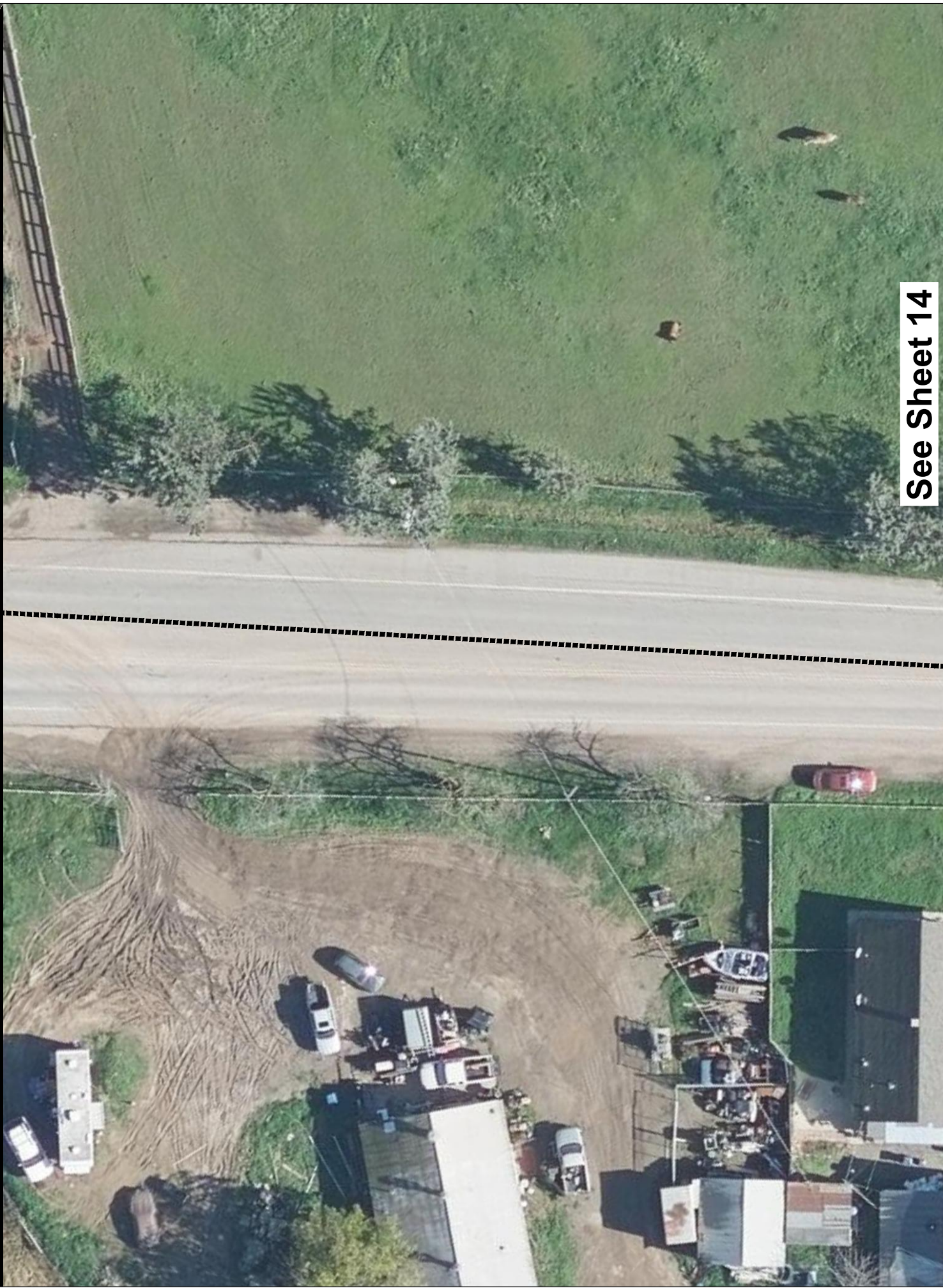
Ferguson Rd

12" wide rumble strip
on the center line



See Sheet 12







See Sheet 13



Ferguson Rd

12" wide rumble strip
on the center line

See Sheet 15

See Sheet 14

Ferguson Rd

See Sheet 16

12" wide rumble strip
on the center line

See Sheet 15

Ferguson Rd

12" wide rumble strip
on the center line

See Sheet 17



See Sheet 16

Ferguson Rd

12" wide rumble strip
on the center line

See Sheet 18



See Sheet 17

Ferguson Rd

12" wide rumble strip
on the center line

See Sheet 19



