

# **REPORT ON VIOLENCE PREVENTION AND INTERVENTION MAPPING IN NINE ZIP CODES IN SANTA CLARA COUNTY**

**Date: January 8, 2024**

**County of Santa Clara Public Health Department**

**Violence Prevention Program**

## TABLE OF CONTENTS

Executive Summary	Pg 3
Introduction and Background	Pg 4
Methodology	Pg 5
Results	Pg 9
Conclusion	Pg 15
Acknowledgement	Pg 16

## **EXECUTIVE SUMMARY**

In response to Board request on May 24, 2022, the County of Santa Clara Public Health Department Violence Prevention Program conducted a mapping of place-based violence prevention and intervention strategies in the nine county zip codes with the highest rates of firearm injuries and/or death. These zip codes fell within the boundaries of the City of San José and City of Gilroy. A community violence intervention (CVI) framework was used to identify programs and activities that contributed to the prevention of interpersonal violence occurring in a community setting outside the home. This mapping predominantly explored efforts that were led by non-law enforcement organizations and operated outside of institutional settings.

The majority of included data was collected through key informant interviews with local service providers who have extensive knowledge of where programs are taking place in the county and the strategies they employ. Public Health staff also administered rapid surveys at service provider meetings, reviewed other relevant programmatic scans, and conducted internet searches, to round out the data collection process. Data was compiled into visual maps that indicate locations of organizations, the type of violence prevention/intervention strategies they employ, and the reach of their services.

In the field of CVI, the concept of an ecosystem is often used to describe the complex and interconnected nature of violence prevention efforts. The data captured through this mapping reflects the CVI ecosystem in Santa Clara County, demonstrating the breadth of strategies and the diversity of stakeholders at work. This scan is intended to be a broad, not deep. It provides a “lay-of-the-land” look of organizations and groups operating across the county, building a knowledge base for further strategic planning and research in the future. Furthermore, the findings from this mapping project will inform the planning process for county investments in underserved communities, by ensuring that proposed projects evolve in partnership with frontline community-based organizations to fill existing gaps and advance safe and peaceful neighborhoods.

## INTRODUCTION AND BACKGROUND

The Public Health Department's (PHD) Violence Prevention Program (VPP) aims to prevent violence before it occurs through strategic collaboration, community mobilization, and evidence-based programming. This program is grounded in racial and health equity and uses a strength-based approach to uplift residents' voices and advance protective factors for youth. In 2022, VPP released the Cost of Gun Violence in Santa Clara County report. Its recommendations led to the development of additional strategies to guide the work of PHD, including the redesign of a violence prevention education campaign, and the allocation of funding for prevention and capacity building activities at the community level.

### *Goal and Purpose of Mapping Project*

The goal of the mapping project was to conduct a scan of community-based violence prevention and intervention activities within zip codes and neighborhoods most impacted by violence. The purpose was to better understand the range of strategies deployed in the county, the types of organizations and sectors involved, and the geographical reach of different programs. The findings of this project may be used to identify programmatic gaps, overlaps, areas for deeper collaboration, and opportunities for future investments. In particular, the findings will inform the development of a funding strategy for PHD to disburse the \$1,000,000 budget allocation made by the County of Santa Clara Board of Supervisors for supporting community-led prevention efforts.

### *Scope and Parameters of the Mapping Project*

The field of violence prevention is extremely broad; it includes a wide range of violence in the context of numerous settings and relationships that can be prevented at various levels. In order to design an achievable plan that would meet the goals above with the time and resources available, certain parameters were imposed to limit the scope of the project. The project focused on mapping programs<sup>1</sup> that address interpersonal violence at the community level, outside of the walls of institutions. This field is commonly known as Community Violence Intervention (CVI), where community violence is defined as "violence that happens between unrelated individuals, who may or may not know each other, generally outside the home" (CDC)<sup>2</sup> The parameters of this project excluded the majority of CVI activities led by law enforcement or the criminal justice system with a few exceptions for programs with explicit place-based focus, (see footnote for figure 1), and included only those led by city government community programs, county government community programs, community-based organizations (CBOs), and resident groups. Also, this project was limited to programs that were designed specifically to address gun violence and its contributing factors and did not cover programs that only have indirect ties to reducing gun violence. Similarly, violence prevention work conducted within institutional systems, such as the healthcare system, the education system, the behavioral health system, and substance use system are not deeply covered. Systematic scans of activities outside the scope of this project could be considered by Public Health or other entities as directed by the County Board of Supervisors in the future.

---

<sup>1</sup> For ease of reference, the term "program" will be used to cover all other CVI activities, such as projects, services, events, collaboratives, and initiatives.

<sup>2</sup> Community Violence Prevention, Centers for Disease Control and Prevention, <https://www.cdc.gov/violenceprevention/communityviolence/index.html#:~:text=Community%20Violence%20Prevention-,Community%20Violence%20Prevention,schools%20and%20on%20the%20streets.>

Fig 1. Inclusion and Exclusion Parameters for Mapping

Included	Not included or not covered deeply <sup>3</sup>
Programs that address youth violence, gang violence, gun violence, street violence, and other types of interpersonal violence that occur outside of the home and in a community setting	Programs that address domestic violence, intimate partner violence, gun suicide, self-harm, accidental injuries
Programs that take place in a community setting, outside of the walls of institutions	Programs that take place within the criminal justice system, the educational system, the mental health system, or the healthcare system <sup>4</sup>
Programs that directly address community violence or gun violence	Programs that are focused on other issues, such as substance use or behavioral health, that intersect and contribute to violence

## METHODOLOGY

### *Zip Codes and Neighborhoods Covered*

The overall geographical coverage of this mapping project includes nine county zip codes in the City of San José and the City of Gilroy. The list of zip codes was compiled using data from the Cost of Gun Violence Study. This scan used these two lists (with duplicates removed) to derive the total nine zip codes. Within the zip codes of San José, data collection had deeper coverage in East San José's neighborhoods, as well as the Cadillac-Winchester neighborhood, due to the centralized community organizing and connections to government entities in these areas.

Fig.2 Zip codes Included in Mapping

Zip code	City	Area of the City
95020	Gilroy	Majority of Gilroy
95111	San José	East San José
95116	San José	East San José
95122	San José	East San José
95127	San José	East San José
95110	San José	Downtown
95113	San José	Downtown
95117	San José	West San José
95128	San José	West San José

<sup>3</sup> Some of these programs have been covered in the Cost of Gun Violence Study.

<sup>4</sup> Some programs within these systems have been included due to their place-based focus and community impact in the zip codes studied. These programs include: the Community Prosecutor Unit from the District Attorney's Office, the City of San José's Safe School Campus Initiative schools, community health centers that provide domestic violence and behavioral health services, and the Trauma to Triumph program from Santa Clara Valley Medical Center.

### *Data Collection Protocol*

Data collection in all zip codes used a mix methods approach of key informant interviews, rapid surveys, and internal document review and internet research. Subject matter experts (SME) who have extensive knowledge of community-based violence prevention programs in the local area were identified. PHD staff conducted key informant interviews in which SMEs were asked to list organizations that provide services in the community that align with one or more of the strategies in the Community Violence Intervention framework. SMEs were also asked to describe which neighborhoods these services and programs served. This information was entered into a data collection spreadsheet to which the SMEs were also given access in order to correct or complete any data entry that was not done during the meeting. Following this initial data collection, a rapid survey was conducted with violence prevention/intervention service providers at a community collaborative meeting led by the SMEs. Service provider respondents were asked to provide information on what programs their organizations offered, and where in the County these programs operated. Results of the survey were entered into the data collection spreadsheet. The SMEs were then asked to review the final dataset compiled for accuracy and to fill in missing information prior to PHD analysis, mapping, and description for the legislative file.

### *Data collection for interventions within City of Gilroy*

Using this protocol, PHD staff identified the South County Youth Task Force (SCYTF) organizers as SMEs for violence prevention/intervention work in Gilroy. PHD Staff aligned data collection with existing monthly SCYTF technical meetings in order to reduce the burden on stakeholders and ensure optimal data gathering from the over 40 agencies who convene at SCYTF. PHD staff attended the September 27, 2023 SCYTF technical meeting to conduct the full rapid survey with members. Around 33 survey responses were received, and the results were entered into the data collection spreadsheet for evaluation and presentation herein.

### *Data collection for interventions within City of San José*

Using the same protocol stated above, an initial set of key informants were identified through VPP's own partner networks, starting with the County's District Attorney's Office and the Probation Department, City of San José's Youth Intervention Services, and CBOs that play a leadership role in East San José and in the PEACE (Prevention Efforts Advance Community Equity) Partnership. Respondents were asked to identify other individuals who can provide additional information. Key informants were also given the opportunity to fill out an excel data collection tool after the meeting to provide additional information on their programs. Finally, a rapid survey was also conducted during a San José Youth Empowerment Alliance (SJYEA) Technical Meeting to gather information from other CBOs.<sup>5</sup>

### *Spectrum of Intervention Strategies Included in Mapping*

This mapping project used the Spectrum of Violence Intervention framework that is commonly adopted in the field of CVI. Under this framework, there are three main domains: community building,

---

<sup>5</sup> County, city, community-based organizations, and resident groups were consulted as part of this mapping project. More information on data sources can be made available upon request.

intervention, and prevention. The table below provides a definition of each element. The specific strategies under each element are listed below.

Fig 3. Strategies Included in Mapping

Type of Strategy	Specific Strategies Captured
<p><b>Community building</b>  Programs that improve safety and wellbeing for the whole community, improve built environment, build resident capacity and leadership, promote healing and restoration in a collective space, developing solutions at a community level and not an individual level</p>	<ul style="list-style-type: none"> <li>-Developing culturally-centered trauma healing practices</li> <li>-Supporting restorative justice programs</li> <li>-Beautifying neighborhoods: tree planting, removing graffiti and blight, litter pickup</li> <li>-Renovating, repairing, or improving apartment complexes and surrounding areas: fixing broken windows, building sidewalks, adding lights, improving recreational facilities, etc.</li> <li>-Improving parks to increase community safety and use</li> <li>-Hosting community events to increase use of public space, enhance social cohesion, and uplift community voice</li> <li>-Creating community gardens and other connections to nature</li> <li>-Training resident leaders and/or developing tenant and neighborhood associations</li> <li>-Violence prevention education and awareness-raising</li> </ul>
<p><b>Intervention:</b>  Programs to divert youth from entering or re-entering the criminal justice system and giving them alternative pathways; services to prevent retaliation and break the cycle of violence between groups. Often, these services are geared toward youth who are considered "high risk", are known to police, or already have involvement with the law.</p> <p>Also includes services at an individual - level (e.g. for victims to support healing, recovery, and moving away from gang association).</p>	<ul style="list-style-type: none"> <li>-School-based violence intervention programs</li> <li>-Safe passage - protection/support for kids walking to and from school in high violence areas.</li> <li>-Street outreach and violence intervention programs</li> <li>-Hospital-based violence intervention programs</li> <li>-Victim support/assistance: counseling, funeral costs, mental health supports, food, basic needs, deterrence for retribution</li> <li>-Trauma-informed programs with cognitive behavioral therapy</li> <li>-Faith-based interventions</li> </ul>

	-Gender-based interventions -LGBTQ-centered violence intervention
<b>Prevention:</b> Programs for young teens and/or youth of all ages who live in underserved or violence impacted areas; providing positive, pro-social activities, educational enrichment, family supports, caring adults and mentors, career development, positive/protective factors, etc.	-Supporting youth leadership development through arts, music, technology, nature, and sports -Mentorship and coaching -Workforce training interventions – Job Corps etc.

### *Mapping of organizations and programs*

Maps were developed by PHD's Science Branch based on data collected from key informant interviews, rapid surveys, and other sources. Zip code specific maps were produced, as well as maps that showed a larger view of the City of San José and City of Gilroy. The dots on each map represent the physical addresses of organizations, which may include service sites, such as schools and community centers, as well as administrative sites, such as head offices. The color denotes the domains that the organization's programs fall into. These domains are: community building strategies, intervention strategies, and prevention strategies. Circular zones were drawn around these organizational locations based on the distance traveled to access services to reflect estimated ease of accessing on-site violence prevention services. Zones are represented as three tiers:

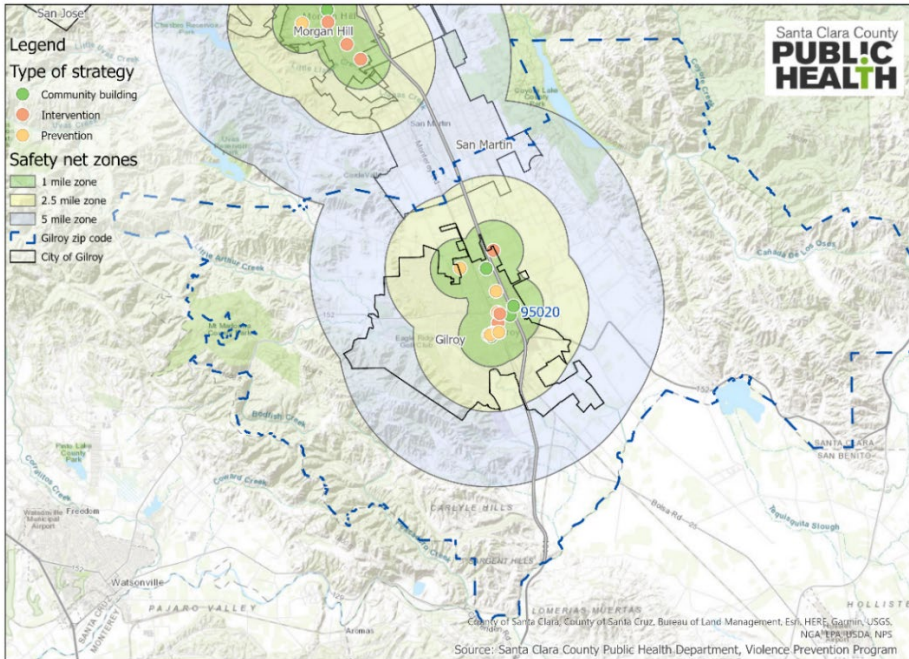
- Green zone reflecting area within a mile radius of service location,
- Yellow zone drawn with a two and half mile radius, and
- Grey zone showing area of 5 mile radius around the location.



## RESULTS

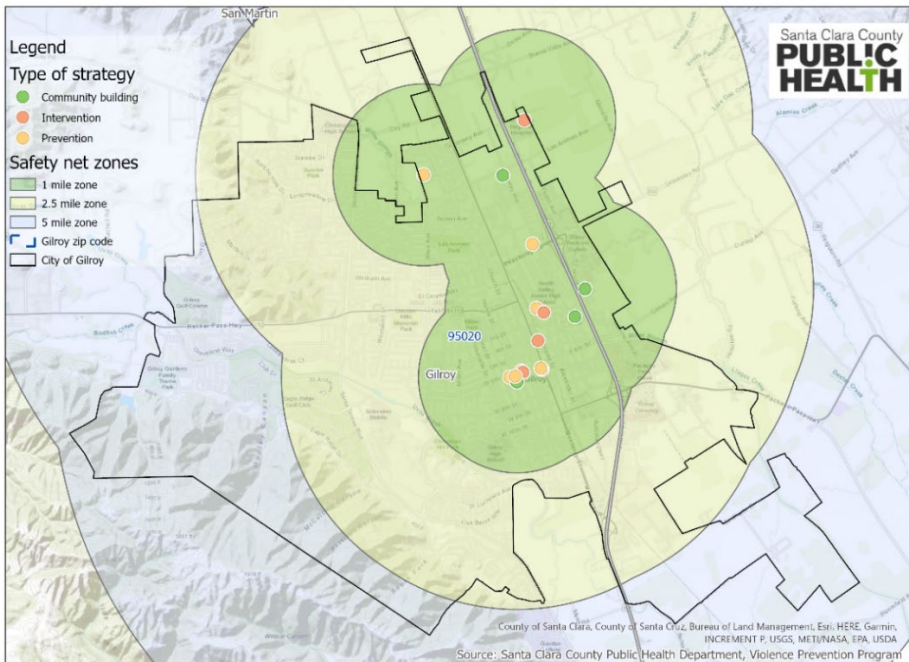
### Map of Gilroy Zoomed Out

Violence Prevention Strategies in Zip Code 95020, Santa Clara County



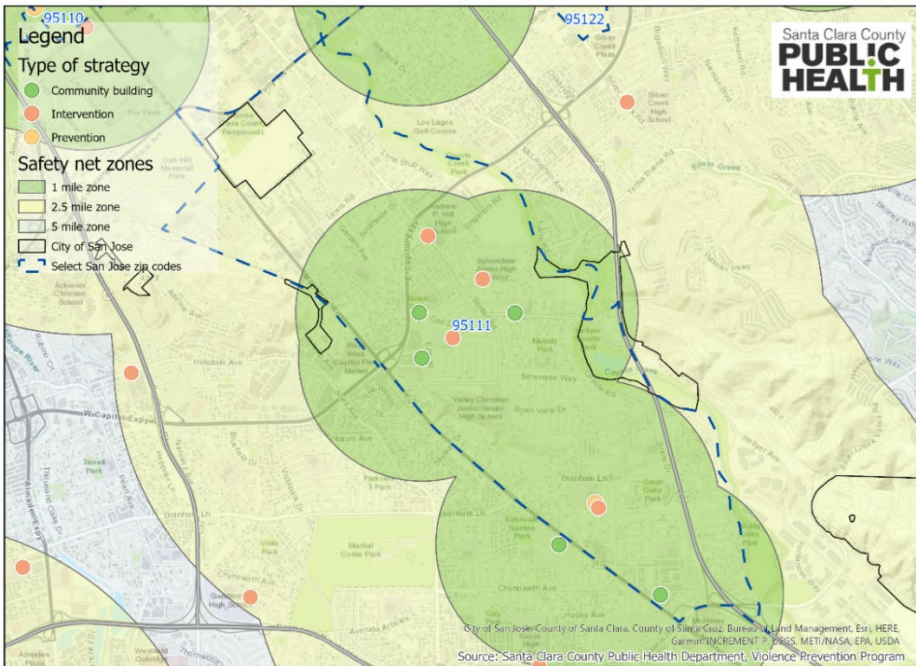
### Map of Gilroy Zip Code Zoomed In

Violence Prevention Strategies in Zip Code 95020, Santa Clara County

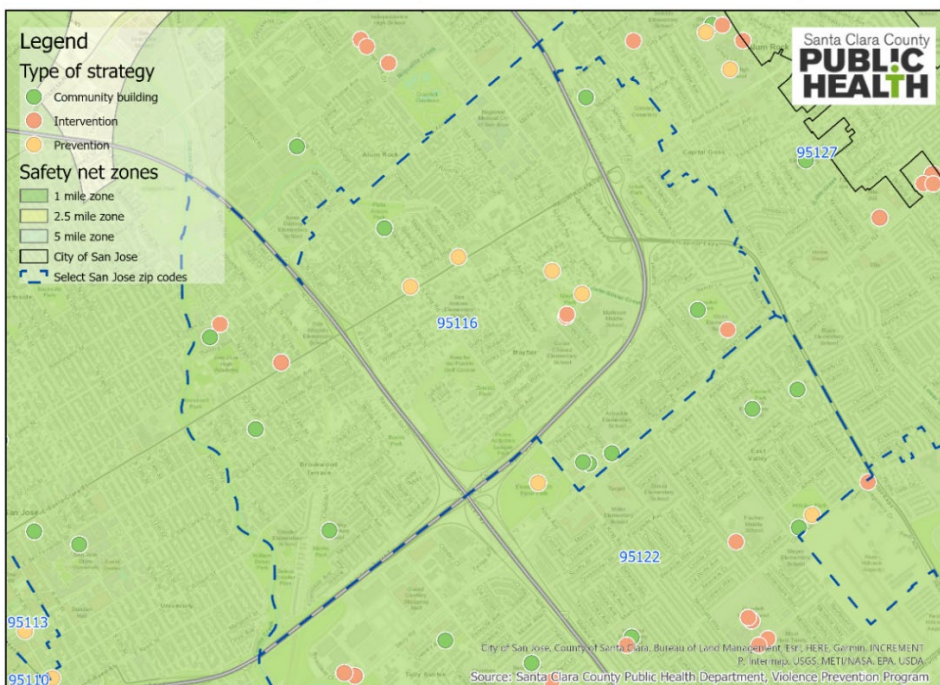


### Maps of Zip Codes in East San José

## Violence Prevention Strategies in zip code 95111, Santa Clara County

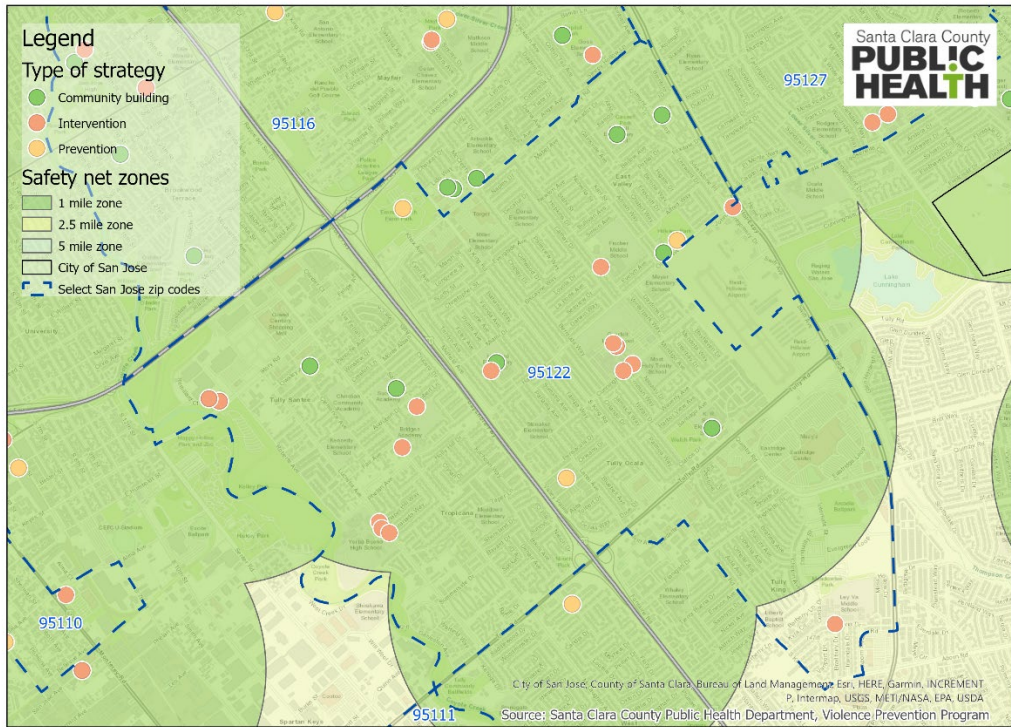


Violence Prevention Strategies in zip code 95116, Santa Clara County

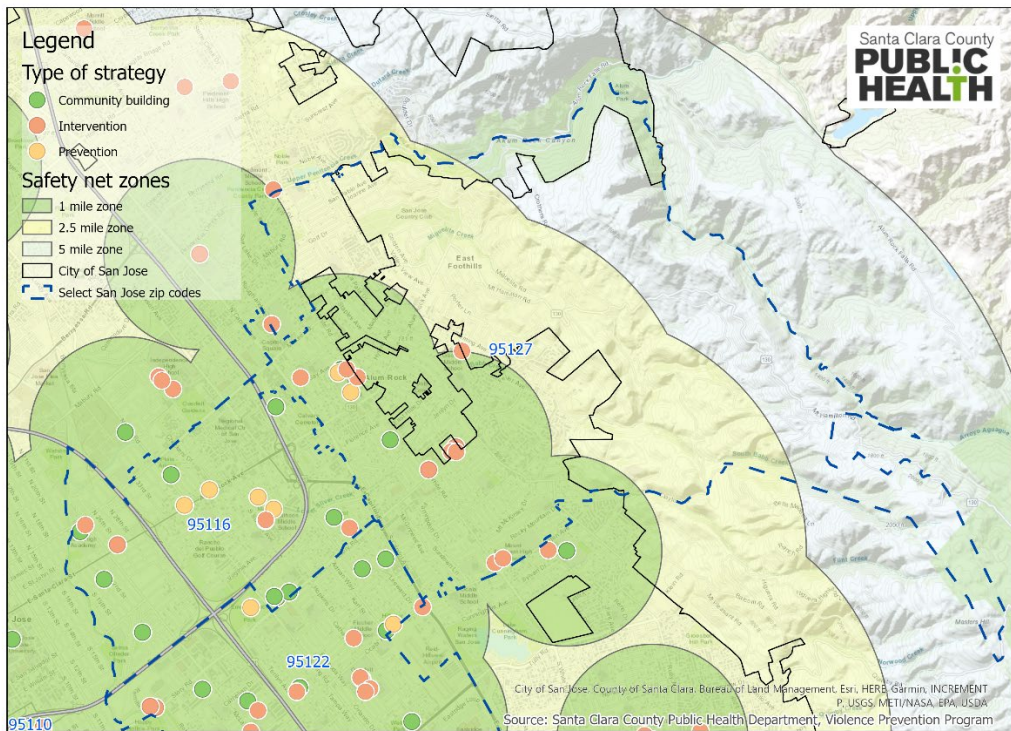




# Violence Prevention Strategies in zip code 95122, Santa Clara County



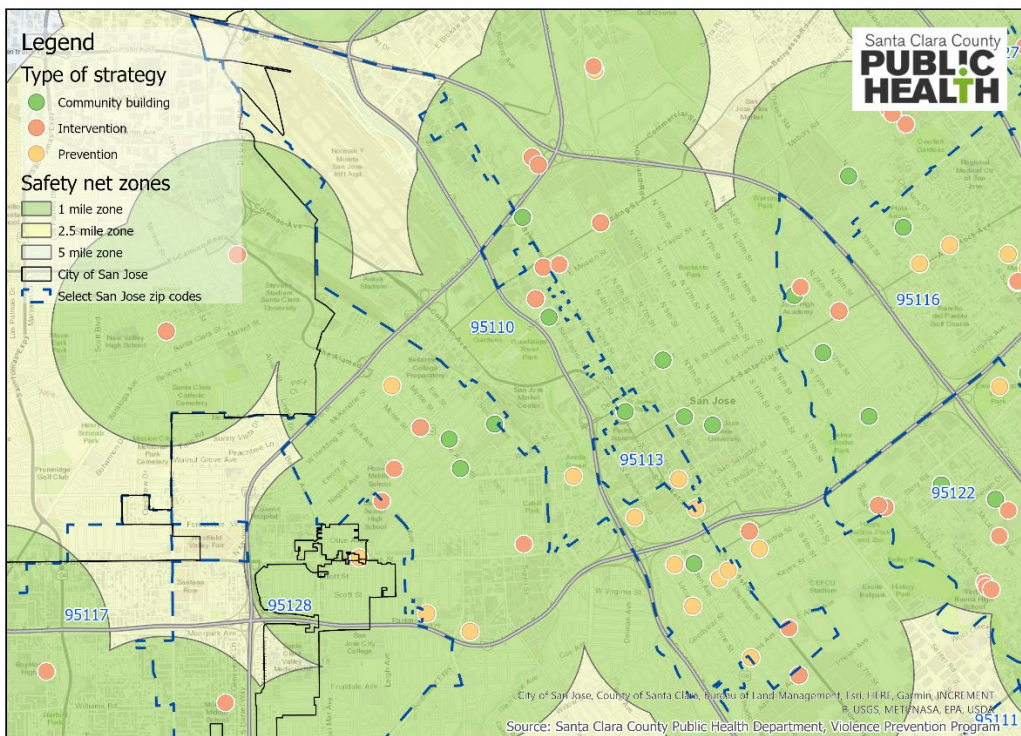
# Violence Prevention Strategies in zip code 95127, Santa Clara County





## Maps of Zip Codes in Downtown San José

### Violence Prevention Strategies in zip code 95110, Santa Clara County



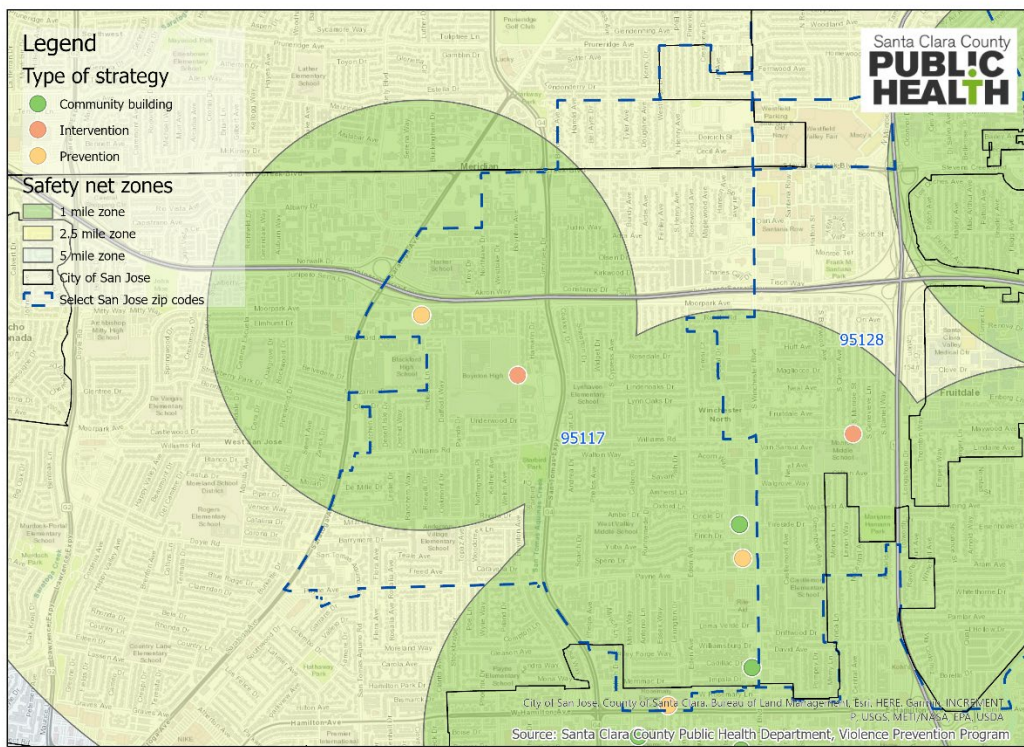
### Violence Prevention Strategies in zip code 95113, Santa Clara County



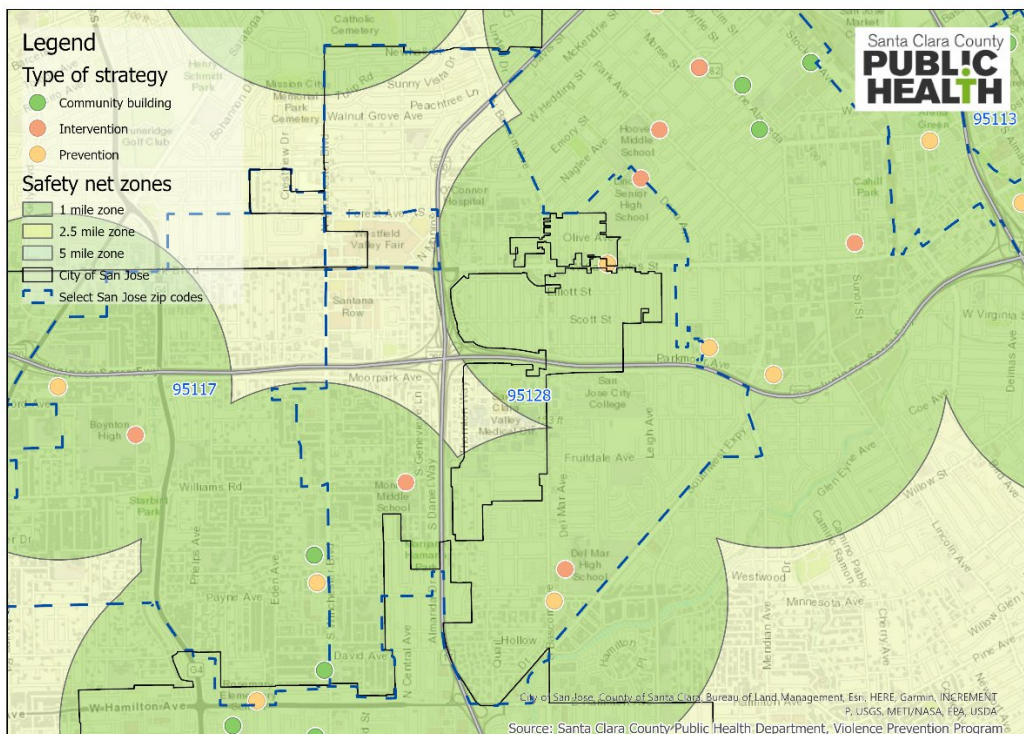


## Maps of Zip Codes in West San José

### Violence Prevention Strategies in zip code 95117, Santa Clara County

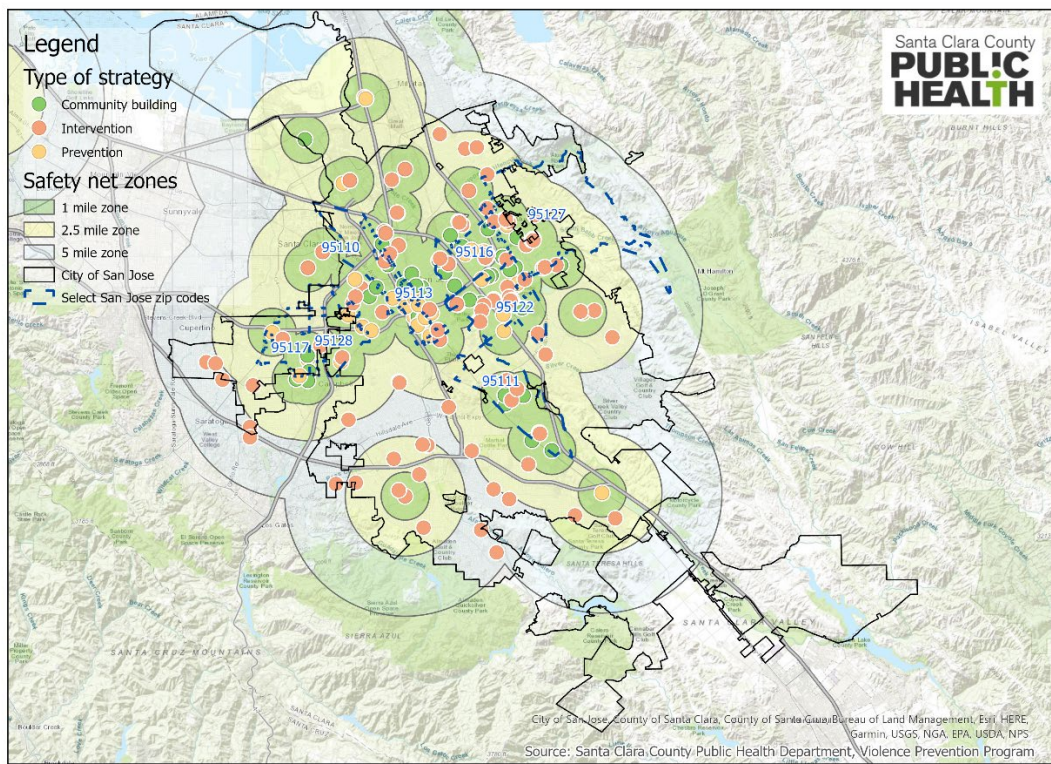


### Violence Prevention Strategies in zip code 95128, Santa Clara County



## Map of San José Zoomed Out

### Violence Prevention Strategies in select zip codes, City of San Jose, Santa Clara County



## Conclusion

The data captured through this mapping reflects the CVI ecosystem in Santa Clara County, demonstrating the breadth of strategies and the diversity of stakeholders at work. This report provides a “lay-of-the-land” look at organizations and groups operating across the county, building a knowledge base for further strategic planning and collaboration and highlighting several findings.

First, this project found that a large number of strategies are led by either a County or a city agency in partnership with CBOs, suggesting that a mix of ongoing County and city-level investments are needed to advance meaningful violence prevention efforts. Second, this mapping identified some strategies with fewer activities, which can be seen as potential gaps meriting further exploration and investment. These potential gaps include: community-led healing and restorative practices, working with faith organizations such as churches and temples to support neighborhood organizing, and implementing broad-based violence prevention education awareness campaigns. Third, when looking across zip codes covered in this scan, Gilroy showed fewer resident-led and neighborhood organizing activities, compared to some of the other zip codes in the county, pointing to potential greater investment needed in this region. Similarly, zip code 95117 had fewer organizations working within its boundaries. However, the Cadillac-Winchester Neighborhood Association is a highly engaged resident group that can be leveraged to expand the impact and connections of service providers to this region.

The data collection methodology employed in this scan is broad, not deep, due to its goal to provide a foundational understanding of the strategies taking place and partners at work throughout the county. The intervention maps do not provide definitive information on what additional programs are needed in a community, or the accessibility, quality, and impact of existing programs. To understand these aspects, more in-depth assessment may be required at a neighborhood level.

Next steps include building an online version of the maps presented in this report, to allow for more detailed view of programs’ strategies and geographical reach. This information will help inform communities and partners around the development or expansion of violence prevention strategies highlighted through this mapping project.

As a third phase in response to the Cost of Gun Violence Study, findings from this mapping project will be used to guide PHD’s funding strategy and evaluation criteria for violence prevention community grants at a neighborhood level. The grant committee will review the gaps and overlaps demonstrated in the maps to target investments, as well as identify potential collaboration and mutually reinforcing strategies that can be implemented. Grantees will be asked to align their proposals to the recommendations of the Cost of Gun Violence Study, particularly around advancing community-centered, place-based prevention strategies in neighborhoods facing concentrated disadvantage (Recommendation 4), and supporting excluded youth by expanding community-led social, recreational, behavioral, educational, and employment opportunities (Recommendation 7). In addition, priority will be given to strategies that demonstrate that their plan is not a duplication of existing services in the specific proposed geographic area based on the mapping herein.

The Public Health Department looks forward to working closely with Procurement and other County partners to issue and amplify the call for proposals, and to respond to gaps identified in this project through expanding the important work to keep our communities safer from the harms of gun violence.



## Acknowledgement

Santa Clara County Department of Public Health would like to acknowledge the following organizations in the development of this report.

Asian Americans for Community Involvement	Evergreen School District
Alum Rock Counseling Center	First 5 Santa Clara County
Alum Rock School District	Foxdale Neighborhood Association
Amigos de Guadalupe	Fresh Lifelines for Youth (FLY)
Asian American Recovery Services -HR360	From the Streets to the Grave, a Mother's Voice
Bay Area Community Health	Garden to Table Silicon Valley
Bay Area Tutoring Association	Gardner Health Services
Bay Area Women's Sports Initiative	Gilroy Library
Biblioteca Latinoamericana Branch Library	Gilroy Recreation Center
Bill Wilson Center	Gilroy School District
Boys and Girls Club of Silicon Valley	Girl Scouts
Caminar - Family and Children Services of Silicon Valley	Grail Family Services (GFS)
Caroline Davis Intermediate School (Oak Grove School District)	Grammercy Neighborhood Association
Carry the Vision	Guadalupe Washington Neighborhood Association
Catholic Charities of Santa Clara County	Hellyer Neighborhood Association
Center for Employment Training	Hope Services
Center for Training and Careers	James Lick High school
Children's Discovery Museum	JobTrain
City of Gilroy	JUMA Ventures
City of Morgan Hill	Justice for Josiah
Community Solutions	Lyndale Neighborhood Association
ConXión to Community	Mayfair Community Center
County of Santa Clara Department of Public Health	Mayfair Neighborhood Association
County of Santa Clara Department of Public Health - Violence Prevention Program	Mckinley-Bonita Neighborhood Association
County of Santa Clara District Attorney's Office	McLaughlin Neighborhood Association
De Colores LLC	Midtown Family Services
Department of Family and Children's Services	Moms Demand Action - Bay Area Chapter
Digital Nest	Morgan Hill Unified School District
Diocese of San José Recent Victim Street Ministry Services	Movimiento de Arte Y Cultura Latino Americana
District 5 United	
Downtown College Preparatory Charter School	Mt. Pleasant Neighborhood Association
East Side Union High School	Mujeres Empresarias Tomando Accion (META)
Eden Church	National Compadres Network
Empowering our community for success (EOC)	New Hope for Youth
	Next Door Solutions to Domestic Violence
	Nueva Vida
	Olinder Neighborhood Association
	Orchard Glen Neighborhood Association



Overfelt Highschool  
Overfelt Neighborhood Association  
Pacific Clinics  
Peace it Together  
People Acting in Community Together  
Plata Arroyo Neighborhood Association  
Poco Way Neighborhood Association  
Rebekah Children's Services  
Rocketship Alma Academy  
Roosevelt Park Neighborhood Association  
Rosemary Elementary School  
Roundtable Neighborhood Association  
Sacred Heart Nativity School  
San José Conservation Corps & charter school  
San José Downtown Residents Association  
San José Parks, Recreation and Neighborhood Services  
San José Police Department  
San José Public Library  
San José State University - Students Demand Action  
San José Youth Intervention Services  
Santa Clara County  
Santa Clara County Office of Education  
Santa Clara County Probation Department - Juvenile Probation  
Santa Clara County Probation Department - Neighborhood Safety Unit  
Santa Clara County Public Defender Office

Santa Clara County Reentry Services  
Santee Neighborhood Association  
Saved by Nature  
Seven Trees Neighborhood Association  
Shine Together  
Silicon Valley De-Bug  
SJ Jazz  
SJ Job Corps  
SJ Works  
SOMOS Mayfair  
South County Youth Taskforce  
Starlight Community Services  
The Art of Yoga  
The City Peace Project  
The Foundation for Hispanic Education  
The Home Church  
The Tenacious Group  
Tropicana/Lanai Neighborhood Association  
Ujima Adult and Family Services  
Valley Palms Unidos  
Veggielution  
Washington Elementary  
Welch Park Neighborhood Association  
Wheeler Center  
Work2Future  
Year up  
Young Women's Freedom Center  
Youth Alliance