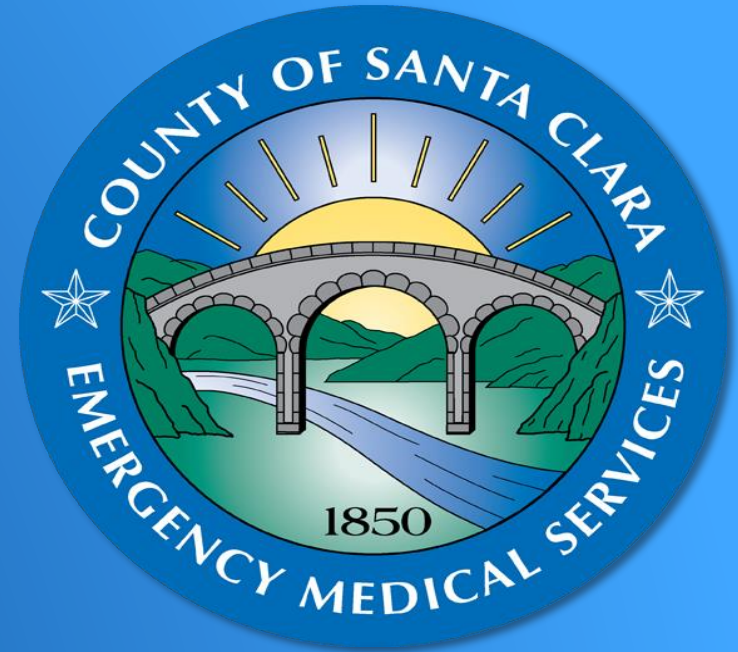


**RMC Specialty Services  
Reduction  
Board of Supervisors Meeting**

**Tuesday, April 16, 2024**



# Assessment Process

Notification:  
Day 0



Day 60



Reduction:  
Day 180

Receive Notification

Begin Assessment

Public Hearing

Complete Assessment

Submit Assessment to State

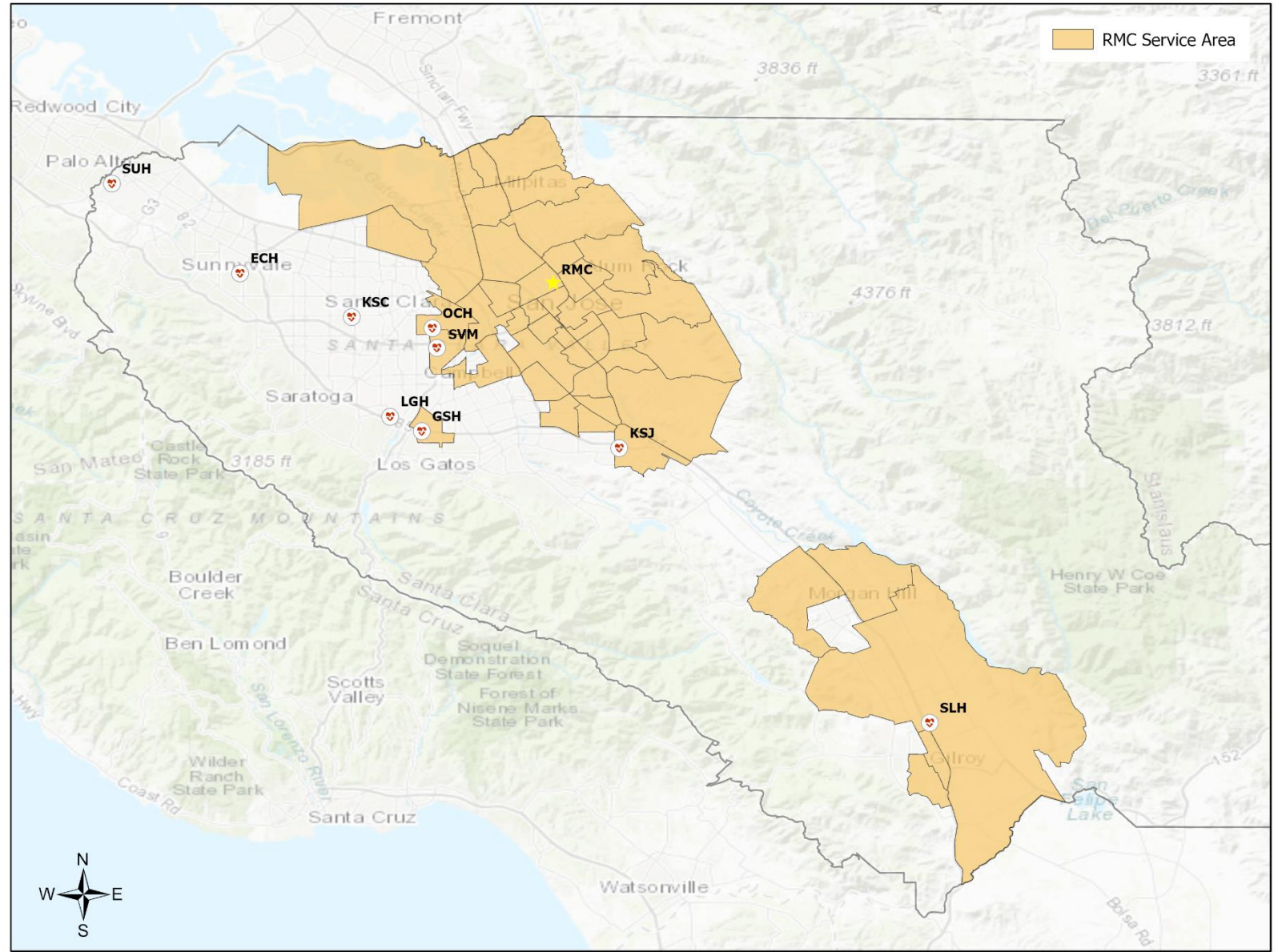
Stakeholder Meetings

Reduction of Services **8/12/2024**

Monitoring and Evaluation

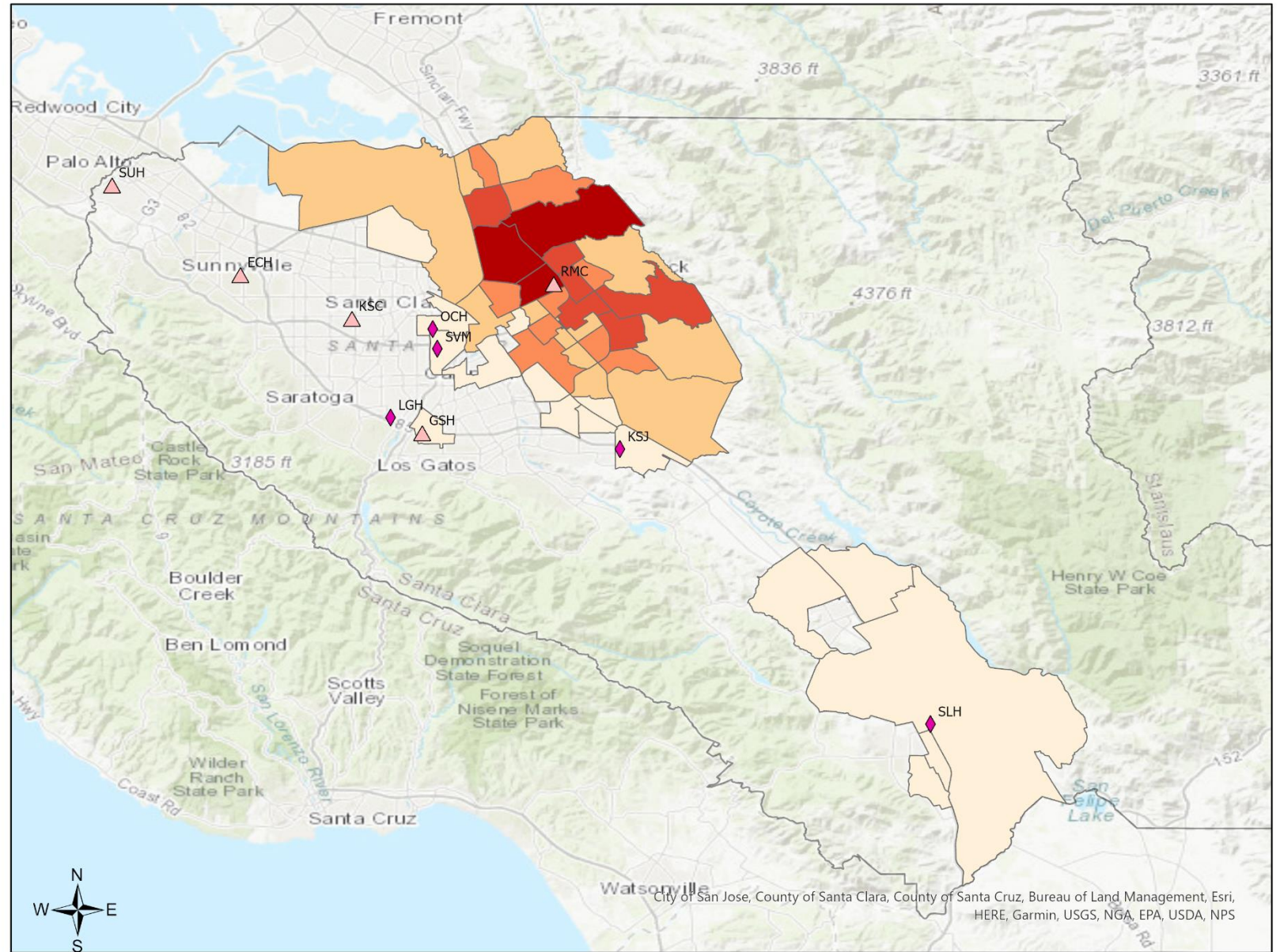


# RMC Service Area with Specialty Hospitals in Santa Clara County

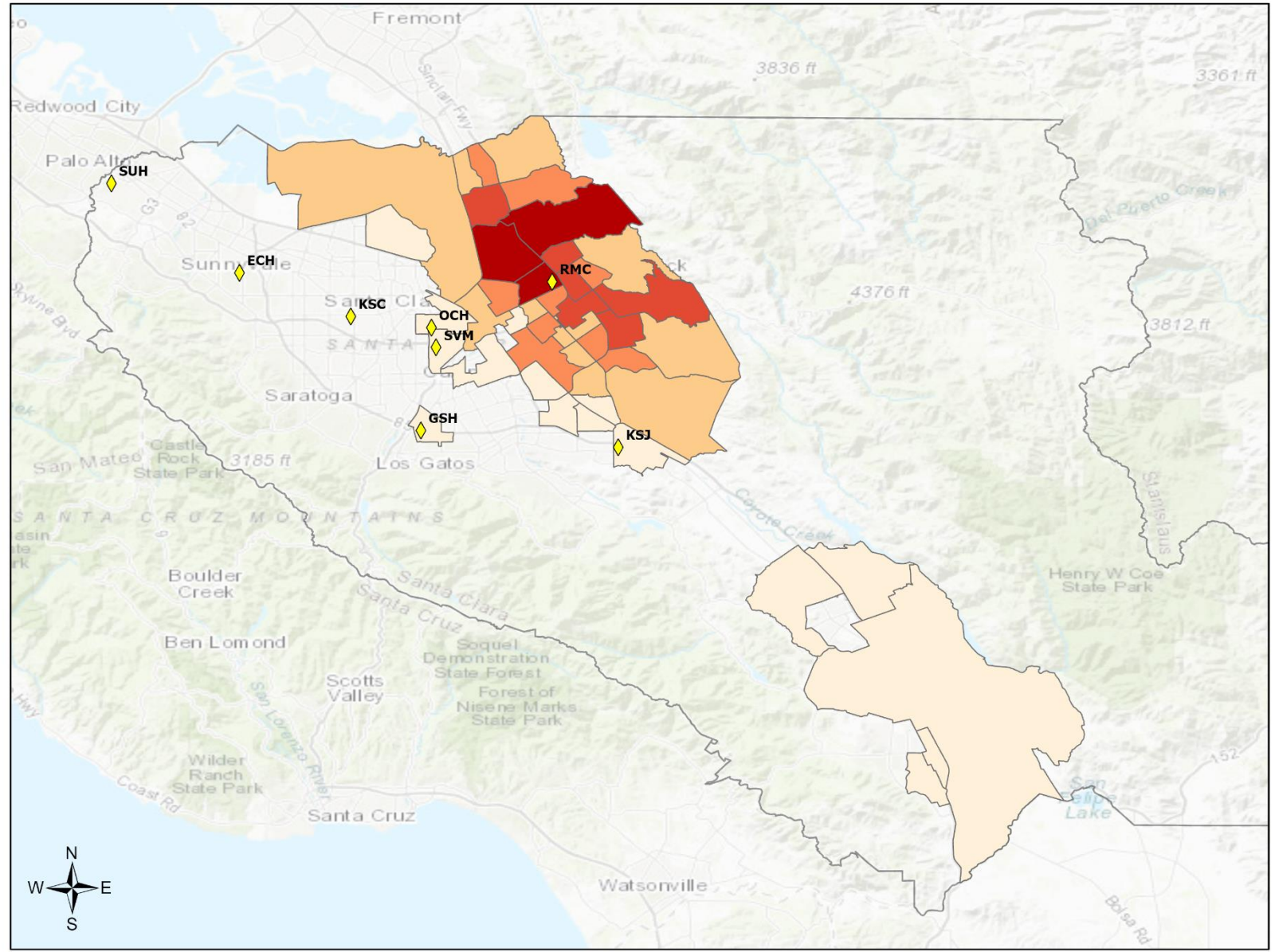




# RMC Service Area with Stroke Hospitals in Santa Clara County

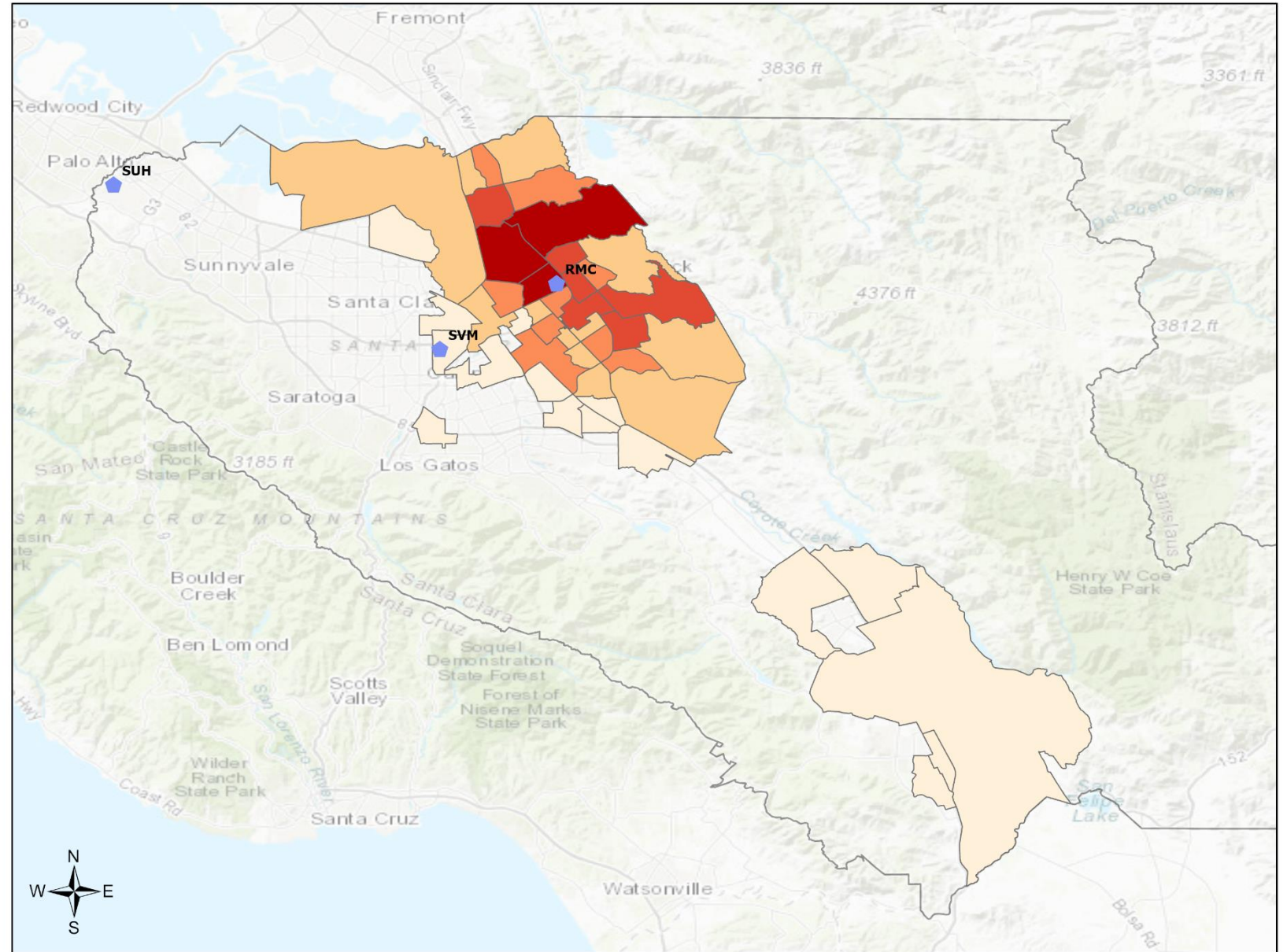


# RMC Service Area with STEMI Hospitals in Santa Clara County





# RMC Service Area with Trauma Hospitals in Santa Clara County



# RMC Service Area Characteristics

Race/Ethnicity		
	RMC Service Area	Non-RMC Service Area
Hispanic	63%	37%
Asian	50%	50%
White	30%	70%
African-American	55%	45%

Age Range (in years)		
	RMC Service Area	Non-RMC Service Area
<15	46%	54%
16-64	48%	52%
65+	45%	55%



# RMC Service Area Characteristics

Families living below 200% Poverty Line		
	RMC Service Area	Non-RMC Service Area
<5%	7%	14%
5-14%	39%	73%
15-24%	33%	11%
25+%	22%	2%

Median Household Income		
RMC Service Area	\$124,940	
Non-RMC Service Area	\$158,419	





Hospitals	Miles from Regional [Shortest Route Rounded Up to Whole Mile]	Travel Time [Under Ideal Traffic Situations]
O'Connor	9	14
Valley Medical Center	10	16
Kaiser-Santa Clara	13	18
Kaiser-San Jose	14	18
El Camino-Los Gatos	14	19
Good Samaritan	15	18
El Camino-Mountain View	15	24
Stanford Medical Center	21	33
Palo Alto Veterans	25	28
Saint Louise	31	32



# Conclusion

- Severe impact on EMS System efficiency; longer transport times
- Hospitals immediately adjacent to RMC's service area will experience the most significant impacts, increasing concerns relating to quality and safety of patient care
- Reduction of services places burden directly on patients, especially vulnerable populations, including older adults and persons of color
- Long term impacts to morbidity, mortality, and key health indicators

