

13. Under advisement from September 19, 2023 (Item No. 13): Receive report relating to options to establish a third round of funding in the amount of \$10 million for an All-Inclusive Playground Grant Program. (LA-1)
(ID# 24-2180)

Equity Analysis



AIPG equity scores are based on an aggregation of layers (variables) with values reflecting contribution to equity.



Census (ACS) and Esri demographic data were created at the block group level. Values for each variable were ranked 1-10 based on natural breaks classifications, with higher values receiving a rank closer to 10.



Note that distance to inclusive playgrounds is not weighted based on the size or features of those playgrounds. Proper interpretation of this map should consider differences among facilities.

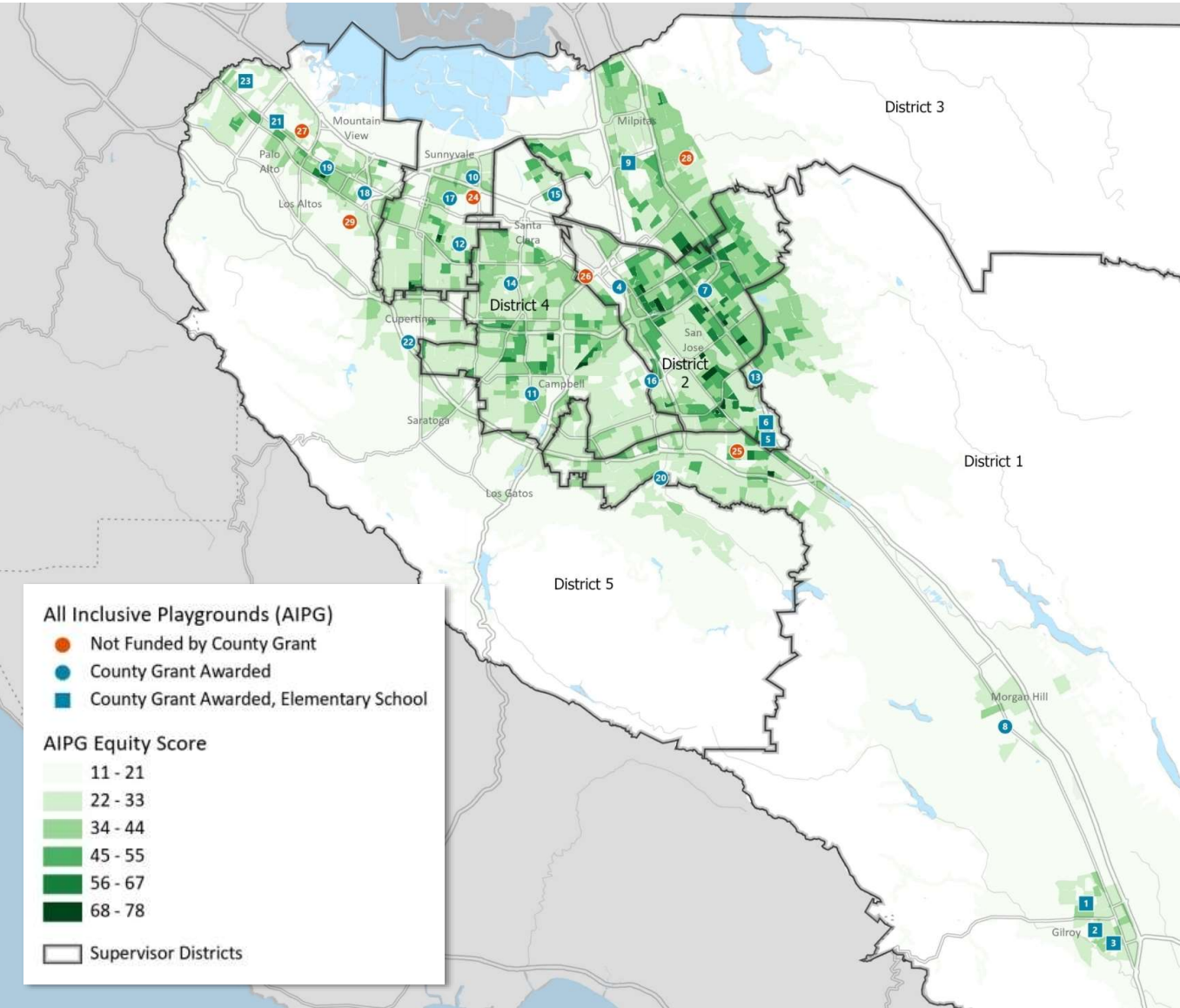


Public transit information was considered but was intentionally left out of the modeling process. Subsequently adding transit information as an additional map layer provides more effective interpretation of variables such as transit routes and stops.

Equity Analysis Variables

double-weighted
triple-weighted

- Driving Distance to Inclusive Playground Areas (Calculated)
- Density of Households Below Poverty Level (ACS 5yr 2021)
- Density of Households with 1+ Persons with a Disability (ACS 5yr 2021)
- Density of African American Population (Esri estimate 2023)
- Density of Hispanic Population (Esri estimate 2023)
- Density of Asian Population (Esri estimate 2023)
- Density of Hispanic Population with Limited English (ACS 5yr 2021)
- Density of Asian Population with Limited English (ACS 5yr 2021)



Map Number	Grantee	Project Name
1	Gilroy USD	Rod Kelley Elementary School
2	Gilroy USD	El Roble Elementary School
3	Gilroy USD	Glen View Elementary School
4	City of San Jose	Rotary Playgarden Park
5	Oak Grove SD	Edenvale Elementary
6	Oak Grove SD	Stipe Elementary
7	City of San Jose	Emma Prusch Park
8	City of Morgan Hill	Magical Bridge Playground in Morgan Hill
9	City of Milpitas	McCandless Park and Mattos School Playground Project
10	City of Sunnyvale	Lakewood Park
11	City of Campbell	John D. Morgan Park
12	Santa Clara Unified School District	Ponderosa Play-4-All
13	Franklin-McKinley School District	Ramblewood All Inclusive Playground
14	City of Santa Clara	Central Park Arbor Center
15	Santa Clara USD	The Amazing Montague Play Yard
16	City of San Jose	Lincoln Glen Park
17	City of Sunnyvale	Magical Bridge Playground in Sunnyvale
18	Mountain View Whisman School District	Landels Playground
19	City of Mountain View	Magical Bridge Playground in Mountain View
20	City of San Jose	Almaden Lake Park
21	Palo Alto USD	Playground at El Carmelo Elementary School
22	City of Cupertino	Jollyman Park All-Inclusive Playground
23	Palo Alto Unified School District	PAUSD Addison Inclusive School Playground
24	non-AIPG	Muwekma Park
25	non-AIPG	Coy Park
26	non-AIPG	Newhall Park
27	non-AIPG	Magical Bridge Playground at Mitchell Park
28	non-AIPG	Berryessa Creek Park
29	non-AIPG	Cuesta Park



24-2180

DATE: February 6, 2024

TO: Board of Supervisors

FROM: Gregory G. Iturria, County Budget Director
Don Rocha, Director, Parks and Recreation Department

SUBJECT: All-Inclusive Playground Grant Program – Proposed Third Round Funding

RECOMMENDED ACTION

Under advisement from September 19, 2023 (Item No. 13): Receive report relating to options to establish a third round of funding in the amount of \$10 million for an All-Inclusive Playground Grant Program. (LA-1)

FISCAL IMPLICATIONS

Approval of the recommended action would have no impact to the County General Fund. Funding would need to be approved through subsequent actions after Board of Supervisors direction. As part of the Fiscal Year (FY) 2023-2024 Mid-Year Budget Review, Administration is recommending creating a reserve for the 2012 Measure A Sales Tax fund balance from FY 2022-2023 in the amount of \$5,512,549. This funding could be allocated for a third round of funding for All-Inclusive Playgrounds or for other community needs identified by the Board of Supervisors. The remaining amount of \$4,487,451 (\$10,000,000 request - \$5,512,519 2012 Measure A funds) for future years could either be funded by the General Fund Contingency Reserve or from a future 2012 Measure A Sales Tax fund balance.

REASONS FOR RECOMMENDATION AND BACKGROUND

This report responds to the Board's referral by Supervisors Simitian and Chavez on September 19, 2023 (Item No. 13) in which the Board asked Administration to report on options to allocate \$10 million on a one-time basis to provide additional matching grant funds for the development of all-inclusive playgrounds, including all-inclusive tracks, arenas, and courts in Santa Clara County. The Board also requested the status of current all-inclusive projects under development (Chavez) as well as an equity analysis for future funding of all-inclusive projects (Arenas).

On February 28, 2017 (Item No. 9), the Board approved the All-Inclusive Playground Grant Program Procedural Guide, which established the All-Inclusive Playground Grant Program to be administered by the Parks and Recreation Department.

In the FY 2017-2018 Adopted budget, a \$10 million reserve was established and funded with \$5 million of 2012 Measure A sales tax funds and \$5 million from other General Fund sources. This established the first round of funding of the All-Inclusive Grants Program.

On September 11, 2018 (Item No. 71), the Board allocated an additional \$10 million from the General Fund Contingency Reserve and established a second round of funding.

- As of December 31, 2023, \$20 million in grant funding has been awarded.
- Eighteen projects totaling \$10.9 million have been completed and reimbursements have been issued.
- Seven more projects totaling \$9.1 million are expected to be completed before July 1, 2025, most of which will be completed in 2024.

One project in the amount of \$49,354 was cancelled at the grantee's request (Happy Hollow Foundation for a project relating to the Backyard Habitat and Dino Dig). **Attachment A** includes a map of County grant funded and non-County grant funded all-inclusive playgrounds in Santa Clara County.

Potential Demand for a Third Round of Funding

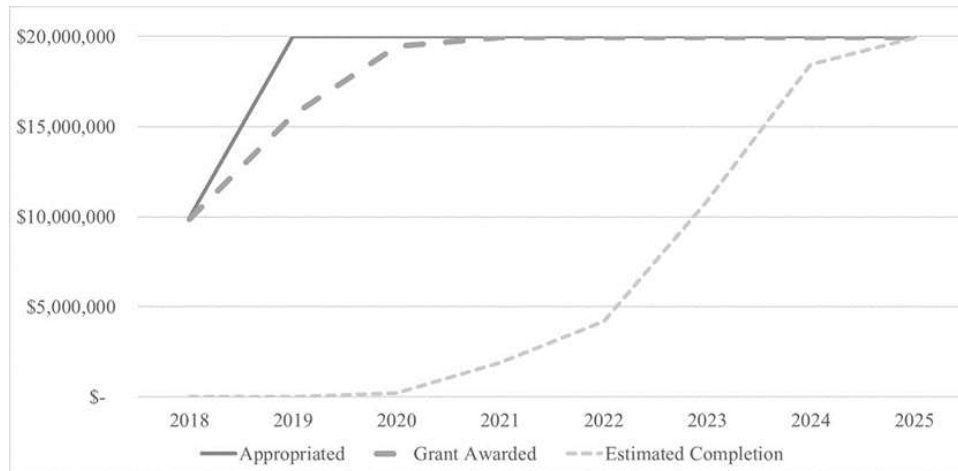
To understand the feasibility of previously submitted projects and gauge current interest in a third round of funding, the Parks and Recreation Department contacted 29 potential applicants including school districts and cities in December 2023. Of the 29 potential applicants contacted, eight responded, but seven stated that they would not be able to match the grant and only one organization stated that it could offer a match at 100%. Should a third round of funding be approved, all previously denied applicants would be invited to reapply and the offer would be extended to new applicants, but it is not known whether there is demand commensurate with the proposed funding level and agencies may not have resource capacity to offer 100% match funding.

Progress on First and Second Rounds of Funding

When funding was awarded for projects on a matching basis, in most cases, school districts, cities, nonprofits, and donors contributed approximately the same amount as the grant award. Five projects, however, were overmatched and ranged from 150% to 300% matching.

Following a change to the All-Inclusive Playground Grant Program Procedural Guide, there were also five projects in the second round of funding that did not receive a matching contribution from the applicant (i.e., the project was solely funded with County resources). All these projects were in elementary school settings and the County's total contribution for these projects was \$2.3 million.

Execution of projects has been affected by COVID-19, supply chain shortages, and weather. Projects where the grant was executed in 2018 have taken, on average, four years to complete. Also, the size of the project can impact the length of time for completion. Execution has improved and projects where the grant was executed in or after calendar year 2020 are expected to be completed within two years. The graph below shows the progress of projects.



The All-Inclusive Playground Grant Program Procedural Guide that was developed and approved by the Board on June 20, 2017 (Item No. 13) set criteria about project scope, design, and accessibility. Applications for the first and second rounds of funding were evaluated by subject matter experts that included advocates for, and members of, the disability community.

Evaluation was based on how well each project addressed the need for accessible spaces for children and parents with cognitive and physical disabilities within Santa Clara County, and the location and access of the playground (e.g., if it was centrally located, walkable, publicly accessible, etc.).

An equity analysis was performed relating to the outcome of projects approved in the first and second rounds. **Attachment A** summarizes the method of the analysis and provides a map of all-inclusive playgrounds. If the Board elects to fund a third round of funding, the Parks and Recreation Department would expand on prior programs by working with the Offices of Diversity, Equity, and Belonging and Disability Affairs to create a program that enhances equitable outcomes.

During the first and second rounds of funding, the County did not award grant funding for all applications that were submitted. While 17 projects that were not approved in the first and second rounds of funding had match funding proposals that ranged from 100% to 300%, not all met the requirements of the grant, including regional availability and access.

The following table shows the total estimated cost of All-Inclusive Playground projects where a grant was not awarded.

Projects that were not approved that represent the potential for unmet demand

District	# of Projects	Requested Grant Amount	Total Project Cost	Match %
1	2	1,150,000	2,300,000	100%
2	2	750,000	1,500,000	100%
3	5	3,104,339	6,666,010	115%
4	4	2,800,000	7,600,000	171%
5	4	2,384,488	4,768,936	100%
Total	17	10,188,827	22,834,946	124%

ATTACHMENTS:

- AIPG Equity Score and Map